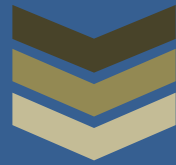


**WEEKLY CURRENT AFFAIRS MAGAZINE for**



**U.P.S.C. - C.S.E.**

**AUGUST-VOL-III-2021**

16 August to 22 August



.....

- UPSC/MPSC/NDA/CDS/CAPF/AFCAT
- PUNE/THANE/DADAR/ANDHERI
- Offline/Online batches/Video course
- [www.pioneeracademypace.com/.in](http://www.pioneeracademypace.com/.in)
- IVR No. – 75060 10635

.....

# PIONEER ACADEMY

## PUNE



### PUNE Address:

301/5 3<sup>rd</sup> Flr, Pinnacle Prestige (Near Durvankur Hotel), Above Cosmos Bank, Opp. Maharashtra Electronics, Tilak Road, Sadashiv Peth, Pune - 411 030  
Mob.: 91453 39324 / 25

## THANE



### THANE Address:

201/202, 2<sup>nd</sup> Floor, Laizer Arcade, Raghoba Shankar Road, Chendani, Thane(W) - 400 601.  
Mob.: 75060 10635

Email : [pioneeracademypace@gmail.com](mailto:pioneeracademypace@gmail.com)

Website: [www.pioneeracademypace.com](http://www.pioneeracademypace.com) / .in

IVR Number : 8080 046 046

## ANDHERI



### ANDHERI Address:

3<sup>rd</sup> Flr, Syndicate Chamber, Above Vaibhav Restaurant, Next To Better Home Hotel, Opp. Andheri (E) Station, Andheri (E) - 400 601  
Mob. 84518 55673 / 70302 92316

## DADAR



### DADAR Address:

306/7/8, 3<sup>rd</sup> Flr, Blue Pearl Society, Senapati Bapat Road, Plot No. 14, Near Janata Cloth Market, Near Dadar Railway Station, Dadar (W), Mumbai-400 028  
Mob : 93241 69627 / 91375 41508

*Success is born of action...*

## Topic 1. WILD BALSAMS

### *Importance for Prelims: Environment*



Kerala researchers determine 3 new species within the Western Ghats region and Idukki district.

- Researchers have known 3 new species of untamed balsam in Kerala, of that 2 are named once Communist veteran and former Chief Minister V.S. Achuthanandan and therefore the former Health Minister, K.K. Shailaja.
- The species, happiness to the rosid dicot genus (family Balsaminaceae), were noticed within the Western Ghats region of southern Kerala and therefore the Idukki district throughout surveys.
- Plants of this genus are popular as 'Kashithumba' in Malayalam.



## Topic 2. TWO-NATION THEORY

*Importance for Prelims: History*



The ideology that faith is that the determinant consider process the position of Indian Muslims and Hindus was postulated by Muhammad Ali Jinnah, WHO termed it because the waking up of Muslims for the creation of Asian nation.

- This theory command that there have been 2 nations-one happiness to the Hindus and alternative to the Muslims-living within the territory of India.
- Sir Syed Ahmad Khan was the primary exponent of the Two-Nation Theory within the era. Events like the Urdu-Hindi contestation (1867), the partition of geographic area (1905), and therefore the Hindu evangelicalism set the Hindus and therefore the Muslims any apart.

### Topic 3. CYCLONES

*Importance for Prelims: Geography*



Nearly 6,800 individuals lost their lives within the country over the past 3 years thanks to hydro - earth science calamities like flash floods, landslips and cyclones, and province has recorded the very best deaths among

all States.

- A tropical cyclone is an intense circular storm that originates over warm tropical oceans and is characterized by low atmospheric pressure, high winds, and heavy rain.
- A characteristic feature of tropical cyclones is the eye, a central region of clear skies, warm temperatures, and low atmospheric pressure.
- Storms of this type are called hurricanes in the North Atlantic and eastern Pacific and typhoons in South-East Asia and China.
- They are well known as tropical cyclones within the southwest Pacific and Indian Ocean region and Willy-willies in north-western Australia. Storms rotate counter-clockwise within the northern hemisphere and right-handed within the southern
- **The conditions favourable for the formation and intensification of tropical storms are:** Large sea surface with temperature higher than  $27^{\circ}$  C. Presence of the Coriolis force. Small variations in the vertical wind speed.
- A pre-existing weak low-pressure area or low-level-cyclonic circulation. Upper divergence above the sea level system.

## Topic 4. RANI GAIDINLIU

*Importance for Prelims: History*



Gaidinliu (26 Gregorian calendar month 1915 – seventeen Gregorian calendar month 1993) was a Kamarupan religious and politician United Nations agency junction rectifier a revolt against British rule out Republic of India.

- At the age of 13, she joined the Heraka religious movement of her cousin HaipouJadonang.
- The movement later turned into a political movement seeking to drive out the British from Manipur and the surrounding Naga areas.
- Within the Heraka faith, she came to be considered an incarnation of the



Goddess Cherachamdinliu.

- Gaidinliu was in remission in 1932 at the age of sixteen, and was sentenced to immurement by the British rulers.
- Jawaharlal Nehru met her at Shillong Jail in 1937, and promised to pursue her release.
- Nehru gave her the title of “Rani” (“Queen“), and he or she gained native quality as ranee Gaidinliu.
- She was released in 1947 after India’s independence, and continued to work for the upliftment of her people.
- An advocate of the ancestral Naga religious practices, she staunchly resisted the conversion of Nagas to Christianity.
- She was honoured as a freedom fighter and was awarded a Padma Bhushan by the Government of India.



## Topic 5. NATIONAL HYDROGEN MISSION

*Importance for Prelims: Environment*



The launch of the National element Mission was proclaimed by PM Modi.

- The aim is to make India a global hub for the production and export of green hydrogen.
- The proposal for the National element Mission was created within the Budget 2021 to launch NHM that might change the generation of element “from inexperienced power sources”.
- Currently imports 85% of its oil and 53% of gas demand, spending ₹12 trillion annually to meet the energy needs.
- As part of the 2015 Paris Agreement, India has pledged to generate 40 per cent of its power through renewable energy — an aim it seeks to fulfil by 2030.
- element gas – Hydrogen may be a colourless, inodorous gas well endowed within the Earth’s atmosphere and is utilized for industrial uses like fossil oil refinement, region applications and producing of chemicals, steel, and ammonia fertilisers.
- Hydrogen is that the lightest and initial part on the tabular array. Since the

burden of element is a smaller amount than air, it rises within the atmosphere and is so seldom found in its pure kind, H<sub>2</sub>.

- At C and pressure, gas may be a nontoxic, non-metallic, odorless, tasteless, colorless, and extremely flammable matter gas.
- Hydrogen fuel may be a zero-emission fuel burned with gas. Molecular gas isn't out there on Earth in convenient natural reservoirs.
- Most gas on Earth is warranted to gas in water and to carbon in live or dead and/or ossified biomass.
- It will be created by ripping water into gas and gas. For industrial processes, gas is extracted primarily through 2 ways, the chemical {process|chemical change|chemical action} of coal or through a process known as steam alkane reformation (SMR).
- In SME, alkane from fossil fuel, once heated with steam, produces monoxide and gas which will be used as fuel.
- However, these ways aren't carbon-friendly, which implies they cause huge emissions of greenhouse gasses like greenhouse emission.
- The gas created from these ways is named 'brown' gas. Another style of gas, referred to as 'blue hydrogen' is additionally extracted equally through SMR however is a lot of carbon-friendly as a result of it captures the greenhouse emission discharged and stores it, as opposition emitting it into the atmosphere. in step with WEC, as of 2019, "96 per cent of gas is created from fossil fuels via carbon intensive processes".
- Hydrogen thus obtained is called 'grey' hydrogen as the process, though not as expensive as the other methods, releases a lot of carbon dioxide.
- Hydrogen can be stored physically as either a gas or a liquid. Storage of hydrogen as a gas typically requires high-pressure tanks.
- Storage of hydrogen as a liquid requires cryogenic temperatures because

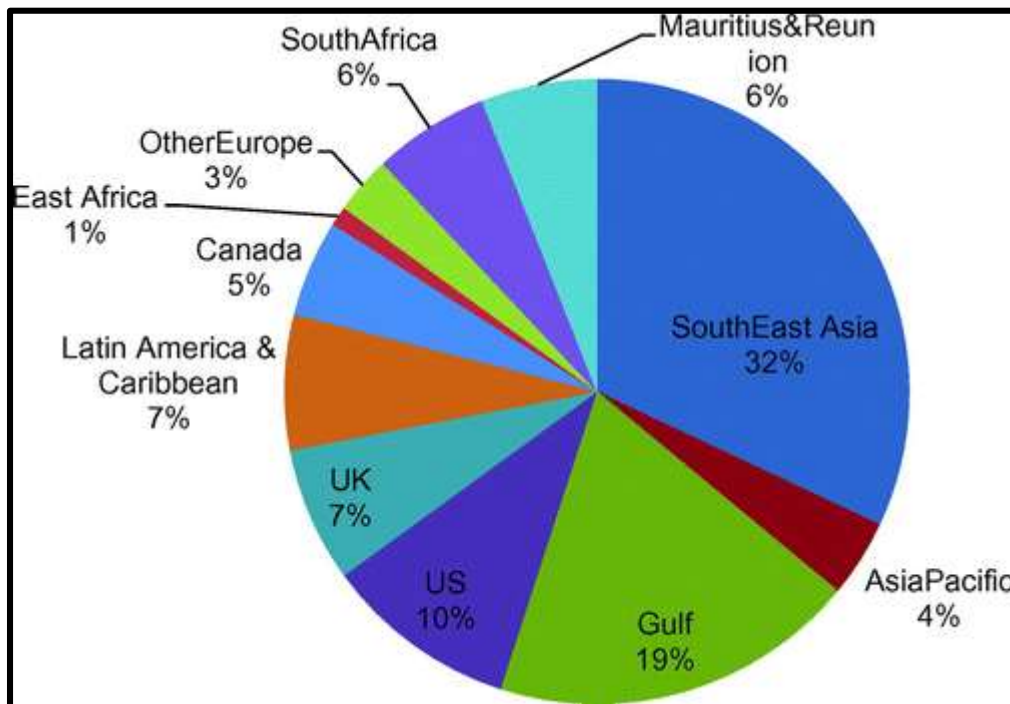
the boiling point of hydrogen at one atmosphere pressure is  $-252.8^{\circ}\text{C}$ .

- Hydrogen can also be stored on the surfaces of solids (by adsorption) or within solids (by absorption).
- Hydrogen isn't a supply of energy, like fossil fuels or renewable sources like daylight and air, however associate energy carrier, which implies it's to be made, or extracted, and keep before it will be used.
- Storage of hydrogen as a liquid requires cryogenic temperatures because the boiling point of hydrogen at one atmosphere pressure is  $-252.8^{\circ}\text{C}$ .
- Hydrogen can also be stored on the surfaces of solids (by adsorption) or within solids (by absorption).
- Earlier this year, the Indian Oil Corporation restricted declared it'd discovered the country's initial inexperienced H plant. Reliance Energy followed, speech communication it'd invest Rs 600 billion in building factories to supply inexperienced H among alternative carbon friendly technologies.



## Topic 6. INDIAN DIASPORA

### *Importance for Prelims: International Relation*



Diaspora group protests in London.

- The term “diaspora” is derived from the Greek word diaspeire in, which means “dispersion”.
- Over time, the term evolved, and currently loosely refers to any person/s happiness to a specific country with a typical origin or culture, however residing outside their country of origin for varied reasons.
- In India, diaspora is often understood to incorporate Non-Resident Indians (NRIs), Persons of Bharatn Origin (PIOs) and Overseas voters of India (OCI), of that PIO and OCI card holders were united underneath one class — OCI — in 2015.
- The Indian migration began in massive numbers throughout Brits rule as articted labourers to former colonies like Republic of Fiji, Kenya and Asian nation.
- It continued in the post-independence period with Indians from different

social strata moving to countries like the United Kingdom, the United States, and Gulf countries.

- According to Global Migration Report 2020, India continues to be the largest country of origin of international migrants with a 17.5 million-strong diaspora across the world, and it received the highest remittance of \$78.6 billion (this amounts to a whopping 3.4% of India's GDP) from Indians living abroad.

## **Topic 7. PROCEDURE ESTABLISHED BY LAW**

### ***Importance for Prelims: Polity***

The “Procedure Established by Law” implies that a law is punctually enacted by the assembly or the involved body is valid on condition that the proper procedure has been followed to the letter.

- The concept has been enshrined in Article 21 of the Indian Constitution, which states that “No person shall be deprived of his life or personal liberty except according to the procedure established by law”.
- “Due method of Law” may be a school of thought that not solely checks if there's a law to deprive the life and private liberty of someone however additionally ensures that the law is created truthful and simply.
- If SC finds that any law as not fair, it will declare it as null and void. This doctrine provides for more fair treatment of individual rights.



## **Topic 8. SUBHADRA KUMARI CHAUHAN**

*Importance for Prelims: History*



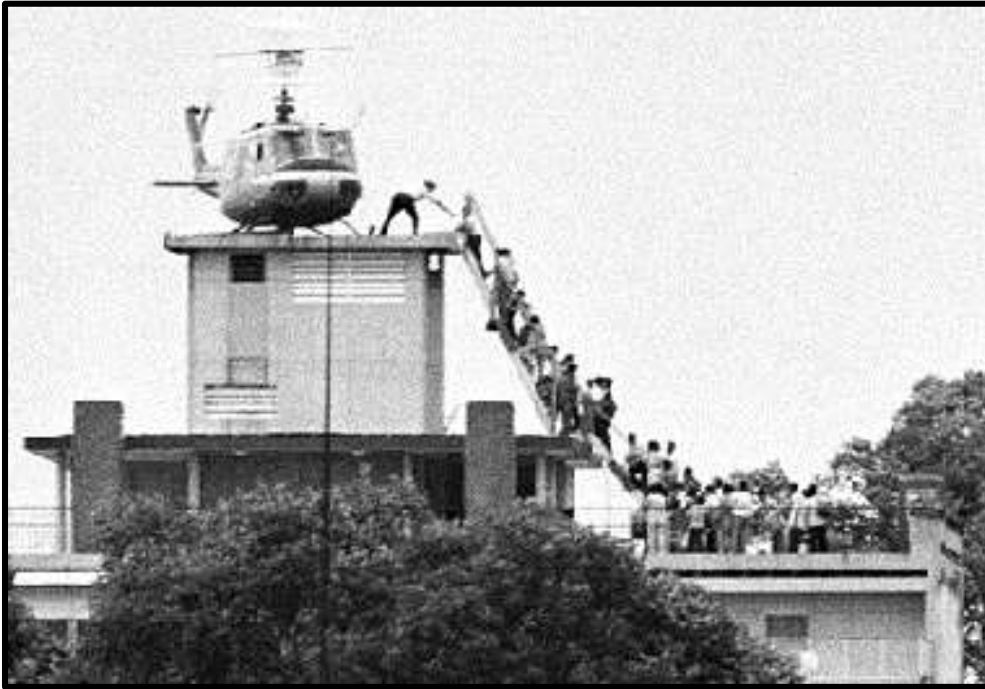
Google has doodled Subhadra Kumari Chauhan.

- Subhadra Kumari Chauhan (16 August 1904– 15 February 1948) was an Indian poet.
- One of her most popular poems is “Jhansi ki Rani” (about the courageous Queen of Jhansi).
- She was celebrated to jot down perpetually, even within the horse cart on the thanks to college, and her initial literary work was revealed at simply 9 years recent.
- The incorporate Indian independence reached its height throughout her early adulthood.
- As a participant within the Indian Nationalist Movement, she used her

poetry to decision others to fight for his or her nation's sovereignty.

## Topic 9. FALL OF SAIGON

### *Importance for Prelims: History*



The warfare, conjointly called the Second Indo-China War, or in Vietnam, is understood because the Resistance War against America. It came to AN endwise thirty Gregorian calendar month 1975 with the autumn of urban center, capital of Asian nation.

- It was a war that raged on in 3 different countries; Vietnam, Laos, Cambodia.
- During the war, the American military presence in the south grew steadily from a few thousand in 1954 to around 540,000 in 1968.
- The Paris Peace Accords, signed in 1973, resulted in an exceedingly peace and therefore the peaceful exchange of prisoners of war.
- In 1976, town|Saigon|city|metropolis|urban center} was renamed holmium Chi Minh City.



## Topic 10. TRIBUNALS

### *Importance for Prelims: Polity*

The Tribunals Reforms Bill, 2021 was introduced in Lok Sabha by government minister Nirmala Sitharaman

- Tribunal could be a quasi-judicial establishment that's established to influence issues like resolution body or tax-related disputes.
- It performs variety of functions like adjudicating disputes, crucial rights between contesting parties, creating AN body call, reviewing AN existing body call so forth.
- A judicature, generally, is someone or establishment having AN authority to guage, adjudicate on, or to see claims or disputes – whether or not or not it's referred to as a judicature in its title.
- Tribunals were not part of the original constitution; it was incorporated in the Indian Constitution by 42 Amendment Act, 1976.
- Article 323-A deals with Administrative Tribunals.
- Article 323-B deals with tribunals for other matters.
- Under Article 323 B, the Parliament and therefore the state legislatures square measure authorised to produce for the institution of tribunals for the judgement of disputes with reference to the subsequent matters: Taxation interchange, import and export Industrial and labour Land reforms Ceiling on urban property Elections to Parliament and state legislatures Food stuff Rent and abidance rights Articles 323 A and 323 B disagree within the **following 3 aspects**:
- While Article 323 A contemplates the institution of tribunals for public service matters solely, Article 323 B contemplates the institution of tribunals surely different matters (mentioned above).

- While tribunals below Article 323 A will be established solely by Parliament, tribunals below Article 323 B will be established each by Parliament and state legislatures with relation to matters falling at intervals their legislative ability.
- Under Article 323 A, only one tribunal for the Centre and one for each state or two or more states may be established.
- There is no question of the hierarchy of tribunals, whereas under Article 323 B a hierarchy of tribunals may be created.
- Central body assembly it's jurisdiction to upset service matters concerning the Central Government staff or of any Union Territory, or native or different government below the management of the govt of Bharat, or of an organization closely-held or controlled by the Central Government.
- The CAT was set-up on 1 November 1985.
- It has 17 regular benches, 15 of which operate at the principal seats of High Courts and the remaining two at Jaipur and Lucknow.
- These Benches also hold circuit sittings at other seats of High Courts.
- The tribunal consists of a Chairman, Vice-Chairman and Members.
- The Members are drawn, each from judicial further as body streams therefore on provide the assembly the advantage of experience each in legal and body spheres.
- The appeals against the orders of an Administrative Tribunal shall lie before the Division Bench of the concerned High Court.
- State body assembly Article 323 B empowers the state legislatures to line up tribunals for numerous matters like levy, assessment, assortment and social control of any of the tax matters connected with land reforms lined by Article 31A
- Tribunals Reforms Bill, 2021 The Tribunals Reforms Bill, 2021

replaces an analogous Ordinance publicised in Apr 2021 that sought-after to dissolve eight tribunals that functioned as legal proceeding bodies to listen to disputes beneath varied statutes, and transferred their functions to existing judicial forums like a civil court or a tribunal.

- The Bill states that the Chairpersons and Members of the court being abolished shall stop to carry workplace, and that they are entitled to assert compensation appreciate 3 months' pay and allowances for his or her premature termination.
- It conjointly proposes changes within the method of appointment of sure different tribunals. whereas the Bill provides for uniform pay and rules for the search and choice committees across tribunals, it conjointly provides for removal of court members.
- It states that the central government shall, on the recommendation of the Search-cum-Selection Committee, remove from office any Chairperson or a Member, who—
  - (a) has been adjudged as associate degree insolvent; or
  - (b) has been guilty of associate degree offence that involves ethical turpitude; or (c) has become physically or mentally incapable of acting in and of itself chairman or Member; or
  - (d) has nonheritable such money or different interest as is probably going to have an effect on prejudicially his functions in and of itself chairman or Member; or
  - (e) has therefore abused his position on render his continuance in workplace prejudicious to the general public interest.



## **Topic 11. EARTHQUAKE**

### ***Importance for Prelims: Geography***

The powerful earthquake that hit Haiti on Saturday killed tons of and dislocated thousands additional. The destruction comes simply eleven years when a quake killed tens of thousands of individuals, if not many thousands. Some 100,000 buildings were destroyed within the 2010 quake.

- The Enriquillo–Plantain Garden fault zone The powerful earthquake that hit Haiti occurred along the Enriquillo-Plantain Garden fault zone, which cuts across Haiti's southwestern Tiburon Peninsula.
- It's the same fault zone along which the devastating 2010 earthquake occurred
- The Enriquillo–Plantain Garden fault zone (EPGFZ or EPGZ) could be a system of active concentric left lateral-moving strike slip faults that runs on the southern aspect of the island of Haiti, wherever Haiti and also the state square measure set.
- The EPGFZ and also the Septentrional-Orient fault zone sure a Gonâve Microplate, of the northern Caribbean Plate that's within the method of cutting off the Caribbean Plate and accreting to the North America Plate Associate in Nursing earthquake is shaking or trembling of the earth's surface, caused by the unstable waves or earthquake waves that square measure generated thanks to a sudden movement (sudden unleash of energy) within the earth's crust (shallow-focus earthquakes) or layer (some shallow-focus and every one intermediate and deep focus earthquakes).
- The purpose wherever the energy is discharged is termed the main target or the hypocentre of Associate in Nursing earthquake.
- The purpose on the surface directly higher than the main target is

termed {epicentre|epicenter|geographic purpose|geographical point} (first surface point to expertise the earthquake waves).

- A line connecting all points on the surface wherever the intensity is that the same is termed AN isoseismic line.

### Causes:

- Fault Zones Plate tectonics Volcanic activity Human Induced Earthquakes

### Waves:

- There are several different kinds of seismic waves, and they all move in different ways.
- The 2 main styles of waves area unit body waves and surface waves. Body waves will travel through the earth's inner layers, however surface waves will solely move on the surface of the world like ripples on water
- The first kind of body wave is the P wave or primary wave.
- This is the fastest kind of seismic wave, and, consequently, the first to 'arrive' at a seismic station.
- The P wave can move through solid rock and fluids, like water or the liquid layers of the earth.
- It pushes and pulls the rock it moves through just like sound waves push and pull the air.
- The second type of body wave is the S wave or secondary wave, which is the second wave felt in an earthquake.
- An S wave is slower than a P wave and can only move through solid rock, not through any liquid medium.
- It is that this property of S waves that semiconductor diode seismologists to conclude that the Earth's outer core could be a liquid.

- S waves move rock particles up and down, or side-to-side—perpendicular to the direction that the wave is traveling in (the direction of wave propagation)

### **Distribution of Earthquakes Causes:**

- Fault Zones Plate tectonics 19/20 Volcanic activity Human

### **Induced Earthquakes Waves:**

- There square measure many completely different styles of unstable waves, and that they all move in several ways that.
- The 2 main forms of waves square measure body waves and surface waves.
- Body waves will travel through the earth's inner layers, however surface waves will solely move on the surface of the world like ripples on water the primary quite body wave is that the P wave or primary wave.
- This is the fastest kind of seismic wave, and, consequently, the first to 'arrive' at a seismic station.
- The P wave can move through solid rock and fluids, like water or the liquid layers of the earth.
- It pushes and pulls the rock it moves through just like sound waves push and pull the air.
- The second form of body wave is that the S wave or secondary wave, that is that the second wave felt in associate earthquake.
- An S wave is slower than a P wave and might solely move through solid rock, not through any liquid medium.
- It is that this property of S waves that diode seismologists to conclude that the Earth's outer core could be a liquid.
- S waves move rock particles up and down, or side-to-side—perpendicular to the direction that the wave is traveling in (the

direction of wave propagation)

### **Distribution of Earthquakes Measuring earthquake:**

- Mercalli's Richter The mensuration|graduated table|ordered series} bases its measurement on the ascertained effects of the earthquake and describes its intensity.
- It could be a linear activity. On the opposite hand, the ordered series measures the seismic waves, or the energy discharged, inflicting the earthquake and describes the quake's magnitude.

### **It is a logarithmic Faults:**

- A fault could be a fracture or zone of fractures between 2 blocks of rock. Faults enable the blocks to maneuver relative to every different.
- This movement could occur speedily, within the sort of associate earthquake – or could occur slowly, within the sort of creep.



## **Topic 12. OPPOSITION PARTY**

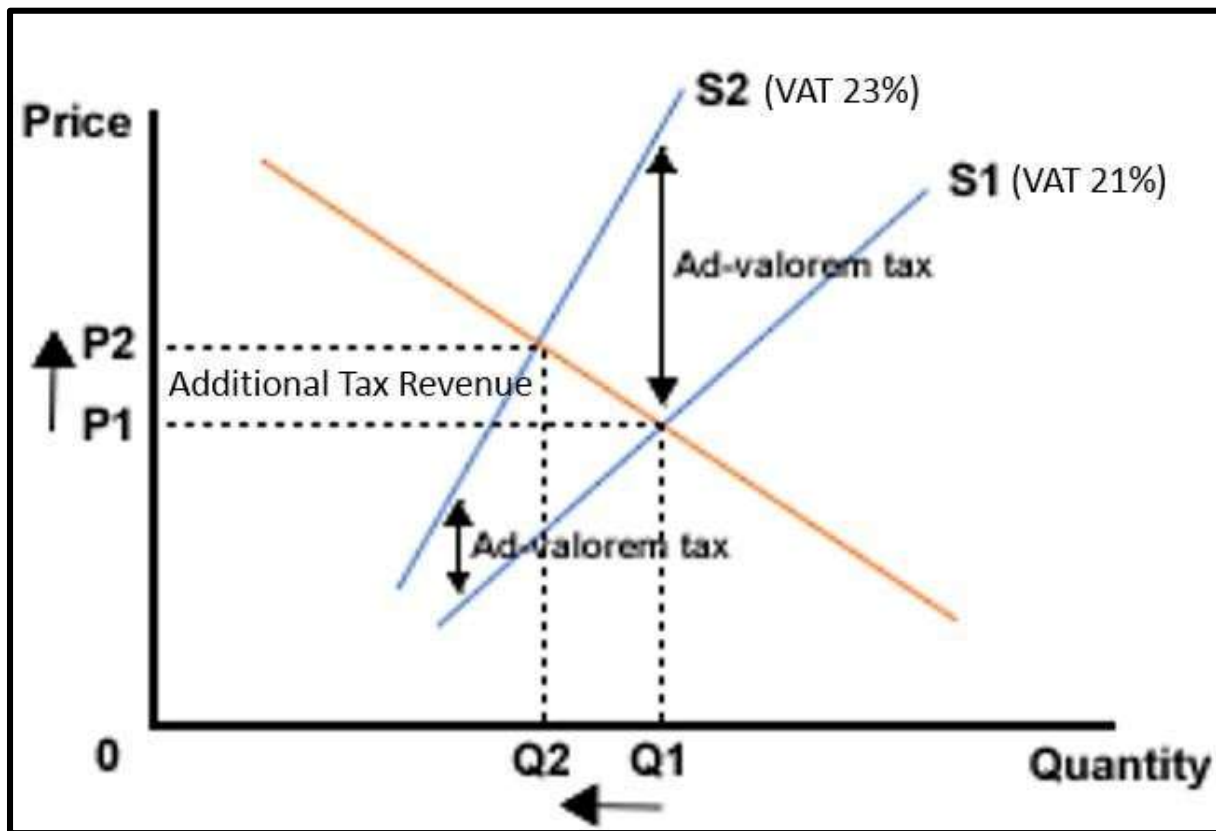
### ***Importance for Prelims: Polity***

No opposition parties in Nagaland Assembly now.

- Leader of Opposition is a statutory office provided for in the Salary and Allowances of Leaders of Opposition in the Parliament Act, 1977.
- The leader of the party in opposition to the government which has the greatest number becomes the Leader of Opposition.
- The Speaker needs to recognise him/her as the Leader of Opposition.
- The rule that a celebration ought to have a minimum of 100% of the members of the House for the Speaker to recognise somebody because the Leader of Opposition isn't a part of this act. G V Mavalankar, the primary Lok Sabha Speaker, same the most opposition party's strength should equal the assemblage i.e., 100% of the full strength.
- This purpose was later incorporated in Direction 121 (1) of the Directions by the Speaker, Lok Sabha, and therefore the Leaders and Chief Whips of Recognised Parties and teams in Parliament (facilities) Act of 1998.

## Topic 13. AD VALOREM TAX

*Importance for Prelims: Economy*



States charge ad-valorem tax on fuel costs.

- Ad valorem tax, any tax obligatory on the premise of the price of the taxed item. virtually the term suggests that “according to price.”
- An ad valorem tax is a tax based on the assessed value of an item, such as real estate or personal property.
- The most common ad valorem taxes are property taxes levied on real estate.
- It is typically imposed at the time of a transaction, as in the case of a sales tax or value-added tax (VAT).

## Topic 14. OIL BONDS

*Importance for Prelims: Economy*

### The bonds burden

<i>Oil bonds</i>	<i>Due to mature</i>	<i>in ₹ crore</i>
8.13% Oil Mkt Comp GOI SB 2021	16-Oct-21	5,000.00
7.75% OMC GOI Spl Bonds 2021	28-Nov-21	5,000.00
8.20% Oil Mkn GOI Spl Bond 2023	10-Nov-23	22,000.00
8.01% Oil Mkt Cos GOI SB 2023	15-Dec-23	4,150.00
8.20% Oil Mktg Cos GOI SB 2024	12-Feb-24	5,000.00
8.20% Oil Mktg Cos GOI SB 2024	15-Sep-24	10,306.33
6.35% Oil MktnCo GOI Bond 2024	23-Dec-24	22,000.00
7.95% Oil Mktg Cos GOI SB 2025	18-Jan-25	11,256.92
8.40% Oil Mktn Co GOI Spl B 2025	28-Mar-25	9,296.92
6.90% Oil Mktg Cos GOI SB 2026	04-Feb-26	21,942.00
8.00% Oil Mkt Cos GOI SB 2026	23-Mar-26	10,000.00
8.40% Oil Mktg Cos GOI SB 2026	29-Mar-26	4,971.00
<b>Total due</b>		<b>1,30,923.20</b>

### Interest on oil bonds

2019-20	9,989.96
2020-21 (BE)	9,989.96
2020-21 (RE)	9,989.96
2021-22 (BE)	9,989.96

(in ₹ crore)



Oil bonds are issued by the govt. to compensate oil promoting firms (OMCs), fertiliser firms and also the Food Corporation of India (FCI) for losses borne by them within the method of control costs within the domestic market.

- It was introduced in 2005 to defer the payment of cash to the oil promoting firms.
- They are akin to government securities.
- These usually have a long maturity period extending over 15-20 years.

- Interest payments will be due at fixed intervals during the tenure of the bond.
- These debts are not accounted in the fiscal deficit number of the issuing year.
- Unlike cash subsidies, there is no direct cash flow.
- Moreover, oil bonds don't qualify as statutory liquidity quantitative relation (SLR) securities, creating them less liquid in comparison to alternative government securities.
- Oil bonds is listed for liquid money by sale within the secondary market to insurance firms, banks, and alternative money establishments.

**Background:**

- The then government in 2005 took to supplying oil bonds as a substitute for subsidies between 2005 and 2010.
- High crude costs and therefore the blowback from the recession of 2008 inflated fiduciary pressure on the govt..
- By raising capital through bonds, these payments may be created in a very delayed manner while not inflicting a significant step-up in costs, so insulating customers. Between 2005 and 2009, the govt. issued bonds price Rs four 100000 large integer.
- This was done to partly compensate OMCs for recoveries amounting to Rs two.9 100000 large integer.
- Under-recoveries square measure the distinction between worth of buying oil within the international market and therefore the price at that oil product square measure oversubscribed within the domestic market.
- In the aftermath of the recession, OMCs were facing large under recoveries.
- This presented the government with the dilemma of ensuring financial

stability of OMCS, many of which are government-owned, while taking into account political repercussions of allowing fuel prices to rise.

- Oil bonds were chosen as the vehicle to dampen the pressure on OMCs while keeping prices in check.



## **Topic 15. THE MUSLIM WOMEN (PROTECTION OF RIGHTS ON MARRIAGE) ACT 2019**

### ***Importance for Prelims: Governance***

Man accused of triple talaq granted bail.

### **Declaration of Talaq:**

- The Act makes all declaration of talaq, including in written or electronic form, to be void (i.e., not enforceable in law) and illegal.
- The Act defines talaq as talaq-e-biddat or the other similar kind of talaq pronounced by a Muslim man leading to instant and sealed divorce.

### **Offence and Penalty:**

- The Act makes a declaration of talaq a cognizable offence, attracting up to three years imprisonment with a fine.
- **Cognizable Offence:** The offence are cognisable on condition that info with reference to the offence is given by woman (against whom talaq has been declared), or any individual associated with her by blood or wedding.
- **Bail:** The Act provides that the Magistrate may grant bail to the accused. The bail may be granted only after hearing the woman (against whom talaq has been pronounced), and if the Magistrate is satisfied that there are reasonable grounds for granting bail.
- **Compounding Offence:** The offence is also combined (i.e. the parties could hit a compromise) by the jurist upon the request of the girl (against whom talaq has been declared).
- **Allowance:** A Muslim lady against whom talaq has been declared, is entitled to hunt subsistence allowance from her husband for herself and for her dependent youngsters.
- The quantity of the allowance are determined by the jurist.
- **Custody:** A Muslim lady against whom such talaq has been declared, is

entitled to hunt custody of her minor youngsters.

- The manner of custody are determined by the jurist.

## Topic 16. CERT-In

*Importance for Prelims: Science and Tech*



HC seeks Centre's response to petition on information breaches. Plea flags inaction of CERT- In.

- It is associate organisation of the Ministry of physics and data Technology, Government of Bharat, with the target of securing Indian computer network.
- It is the nodal agency which deals with cyber security threats like hacking and phishing.
- It collects analyses and disseminates information on cyber incidents, and also issues alert on cyber security incidents.
- CERT-IN provides Incident hindrance and Response Services likewise as Security Quality Management Services.
- The Information Technology (Amendment) Act 2008 designated CERT-In to serve as the national agency to perform the following functions in

the area of cyber security: Collection, analysis and dissemination of information on cyber incidents.

- Forecast and alerts of cyber security incidents Emergency measures for handling cyber security incidents Coordination of cyber incident response activities. Issue tips, advisories, vulnerability notes and whitepapers concerning data Security practices, procedures, prevention, response and news of cyber incidents.
- Such different functions concerning cyber security as is also prescribed.
- **Additional facts:** Budapest Convention on **Cybercrime:** It is the first international treaty that seeks to address Internet and cybercrime by harmonizing national laws, improving investigative techniques and increasing cooperation among nations.
- It came into force in 2004. India is not a signatory to this convention.
- **Cyber Surakshit Asian country Yojana:** it absolutely was launched in 2018 by Ministry of physical science and knowledge Technology in association with National e-Governance Division (NeGD) and business players.
- It includes awareness programs on cyber security; workshops on best practices and enablement of the officials with cyber security health tool kits.
- Cyber Swachhta Kendra (Botnet Cleaning and Malware Analysis Centre): It provides for the detection of malicious programs and free tools to remove such programs.
- **Indian Cyber Crime Coordination Centre (I4C):** it absolutely was established in 2018 to combat crime in India in an exceedingly comprehensive and coordinated manner.
- It functions below the Ministry of Home Affairs.

## Topic 17. HAITI

*Importance for Prelims: Geography*



Haiti is at risk of devastating earthquakes.

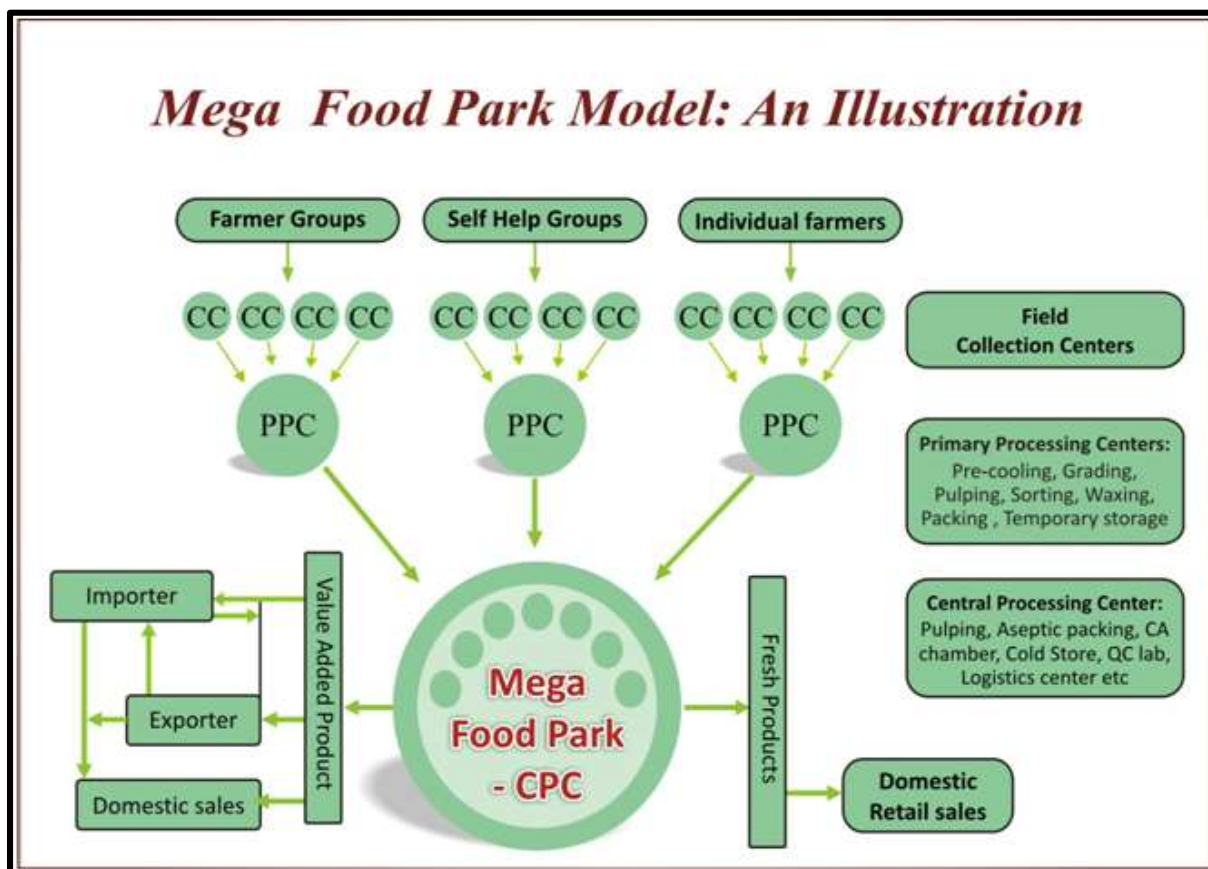
- Earthquakes are wreaking mayhem in Haiti since a minimum of the eighteenth century, once the town of Haitian capital was destroyed doubly in nineteen years.
- Haiti is densely inhabited. Plus, several of its buildings square measure designed to resist hurricanes, not earthquakes.



- Haiti sits near the intersection of two plates — the North American plate and the Caribbean plate.
- Earthquakes can occur when those plates move against each other and create friction.
- Multiple fault lines between those plates cut through or near the island of Hispaniola, which Haiti shares with the Dominican Republic

## Topic 18. TOP TO TOTAL' SCHEME- MEGA FOOD PARK SCHEME

*Importance for Prelims: Government Schemes*



Union Minister for Food process Industries Shri Pashupati Kumar Paras these days aforementioned that efforts area unit on for early completion of nineteen Mega Food Parks within the country, that area unit below varied stages of implementation. Operation Green's high to TOTAL' theme

- **Objective:** The objective of intervention is to protect the growers of fruits and vegetables from making distress sale due to lockdown and reduce the post-harvest losses.
- **Eligible Crops:** Fruits – Mango, Banana, Guava, Kiwi, Lichi, Papaya, Citrus, Pineapple, Pomegranate, Jackfruit; Vegetables – French beans, Bitter Gourd, Brinjal, Capsicum, Carrot, Cauliflower, Chillies (Green), Okra, Onion, Potato and Tomato.

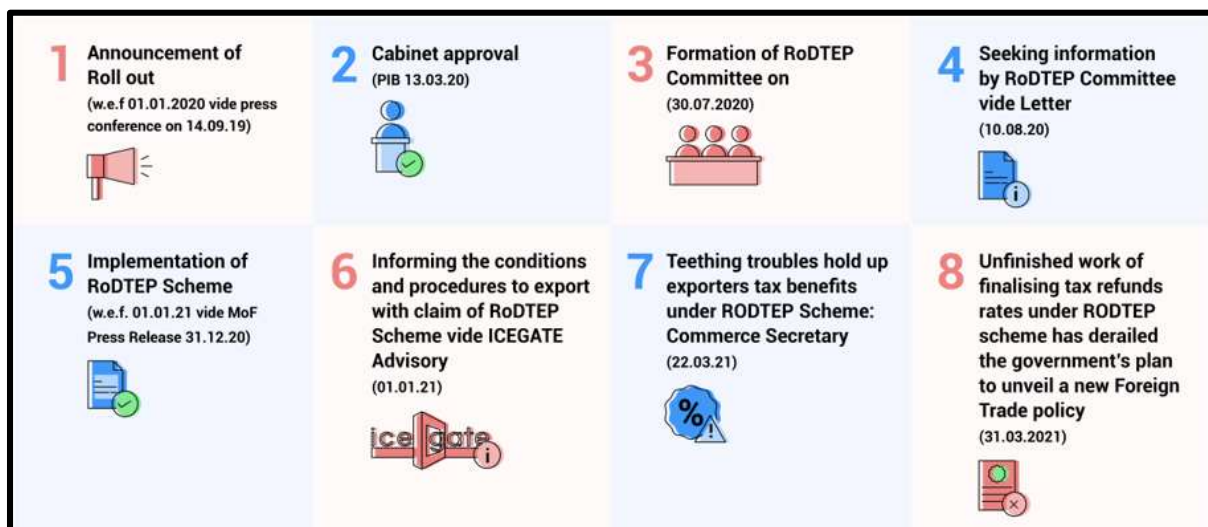
- Any other fruit/vegetable can be added in future on the basis of recommendation by Ministry of Agriculture or State Government.
- **Eligible Entities:** Food Processors, FPO/FPC, Co-operative Societies, Individual farmers, Licensed Commission Agent, Exporters, State Marketing/Co- operative Federation, Retailers etc.
- engaged in processing/ marketing of fruits and vegetables.
- **Pattern of Assistance:** The Ministry of FPI can offer grant @ fifty you look after the price of the subsequent 2 elements, subject to the {value|the price} norms: Transportation of eligible crops from surplus production cluster to consumption centre; and/or Hiring of acceptable storage facilities for eligible crops (for most amount of three months) The theme can boost value addition in twenty two spoilables known by the Ministry to supplement the financial gain of farmers.
- Government has declared enlargement of scope of “Operation Greens Scheme” from Tomato, Onion & Potato (TOP) to twenty two spoilable product, within the budget speech for 2021-2022
- Mega Food Park: Mega Food Parks theme launched by the govt. in 2008 provides monetary help up to fifty crores to setup fashionable infrastructure facilities for food process known as Mega Food Parks.
- The primary objective of the theme is to supply fashionable infrastructure facilities for the food process on the worth chain from the farm to the market with a cluster based mostly approach supported a hub and spokes model.
- It includes the creation of infrastructure for primary process and storage close to the farm within the variety of Primary process Centres (PPCs) and assortment Centres (CCs) and customary facilities and sanctioning infrastructure like roads, electricity, water, ETP facilities

etc. at Central process Centre (CPC).

- These PPCs and CCs act as aggregation and storage points to feed staple to the food process units placed within the CPC.
- The Mega Food Park project is enforced by a Special Purpose Vehicle (SPV), that could be a Body company, registered below the businesses Act The Food Parks can facilitate the farmers of the region growing Litchi, Makhana, Banana, Potato and Maize in massive quantities and can offer recent employment opportunities to girls and youth of the world.

## Topic 19. RODTEP SCHEME

### *Importance for Prelims: Government Schemes*



Centre has nowadays notified RoDTEP theme tips and Rates (Remission of Duties and Taxes on Exported Products). The theme for zero rating of exports can boost our exports & fight within the international markets

- RoDTEP Scheme RoDTEP is a scheme for the Exporters to make Indian products cost-competitive and create a level playing field for them in the Global Market.
- It has replaced the current Merchandise Exports from India Scheme, which is not in compliance with WTO norms and rules.
- The new RoDTEP theme is totally world organisation compliant theme.
- It can reimburse all the taxes/duties/levies being charged at the Central/State/Local level that aren't presently refunded underneath any of the prevailing schemes however area unit incurred at the producing and distribution method.
- Under the scheme, the embedded central, state and local duties or taxes will get refunded and credited in an exporter's ledger account with customs.
- This may be wont to pay basic tariff on foreign product.



- The credits may be transferred to alternative importers, the ministry aforesaid. The RoDTEP rates, conditions and exclusions underneath that it may be availed would be such by the department of commerce, supported recommendation of the GK Pillai committee that square measure expected presently. Scheme's objective Duties/ taxes/ levies, at the Central, State & native level, borne on the exported product, together with previous stage accumulative indirect taxes on merchandise & services utilized in production of the exported product, and indirect Duties/ taxes/ levies in respect of distribution of exported product.
- RoDTEP support are on the market to eligible exporters at a notified rate as a share of Freight On Board (FOB) worth. Rebate on bound export product will be subject to worth cap per unit of the exported product.
- Scheme is to be implemented by Customs through a simplified IT System.
- Rebate will be issued in the form of a transferable duty credit/ electronic scrip (e-scrip) which will be maintained in an electronic ledger by the Central Board of Indirect Taxes & Customs (CBIC).
- Employment Oriented Sectors like Marine, Agriculture, Leather, Gems & Jewellery etc. are covered under the Scheme.
- Other sectors like Automobile, Plastics, Electrical / Electronics, Machinery etc. also get support.
- The entire value chain of textiles also gets covered through RoDTEP.

## **Topic 20. GENE BANKS**

### ***Importance for Prelims: Science and Technology***

Union Minister for Agriculture and Farmers Welfare, Shri Narendra Singh Tomar inaugurated the world's second-largest refurbished progressive National sequence Bank at the National Bureau of Plant Genetic Resources (NBPGR), Pusa, New Delhi.

- Gene banks are a unit a sort of bio repository that preserves genetic material. sequence banks exist to conserve the genetic diversity of untamed and domesticated organisms that humans depend upon for food, fiber, drugs & energy
- Types of sequence Banks are unit Seed Bank, Tissue Bank, Cryo Bank, spore Bank, Field sequence Bank, Sperm Bank, Ova Bank sequence bank for plants is completed by in vitro storage, temperature reduction cuttings from the plant, or stocking the seeds (e.g. in an exceedingly seed bank). sequence bank for animals is completed by the temperature reduction of gamete and eggs in zoological freezers till additional want.
- Gene bank for corals is completed by fragments are unit taken and hold on in water tanks underneath controlled conditions Maintaining material in sequence banks is usually termed 'ex situ conservation' that is outlined as 'the conservation of parts of diverseness outside their natural habitats'
- The National Gene Bank established in the year 1996 to preserve the seeds of Plant Genetic Resources (PGR) for future generations, has the capacity to preserve about one million germplasm in the form of seeds.
- Applications Maintain the sequencetic integrity of its accessions create the accessions simply obtainable to users of germplasm offer the staple for plant breeding and basic scientific

research – Accessions of crop wild relatives are notably valuable as sources of gene suppliers offer germplasm for restoration of lost crops when natural or man-created catastrophes occur. To conserve the Plant Genetic Resources (PGR) for future generations within the store of seeds, genomic resources, pollen etc.

## **Topic 21. THE BHALKI CONSPIRACY**

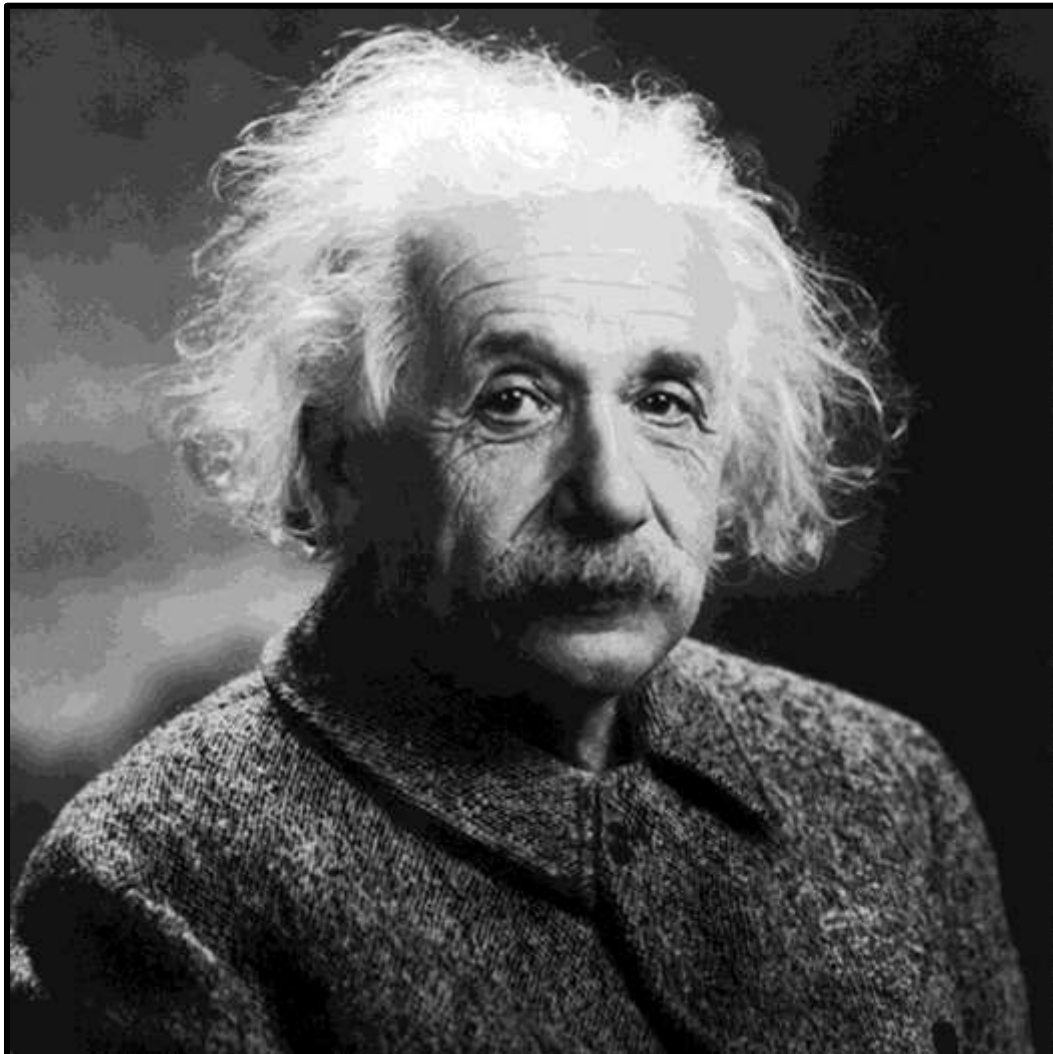
### ***Importance for Prelims: History***

Forgotten tales of the freedom struggle in Karnataka as India celebrates its 75 Independence.

- Exactly ten years when India's 1st War of Independence in 1857, the anti-British sentiments echoed in Bhalki, and it had been later termed the Bhalki Conspiracy.
- The associates of Nana Saheb Peshwa II and Tatya habituate, the notable leaders of the revolt, regrouped in Hyderabad and staged attacks against British camps in Secundrabad, Aurangabad, and different places in 1862.
- Rao Saheb, kinsman of Nana Saheb, WHO diode the attacks, was caught and dead.
- His associate Rama Rao challenged the British by hoisting Bhagwa Dhvaj at Ashti village close to Bhalki in 1867.
- The British began a hunt and once Rama Rao, additionally called Carl Gustav Jung Bahadur, and his associates Balakrishna, Vitoba, and Bhima Rao were holding a gathering at Bhalki, the British in remission them.
- They were charged with hatching a plot against the British and therefore the Nizam rule and awarded captivity.
- The Bhalki Conspiracy is considered to be the last echo of India's First War of Independence.

## Topic 22. ALBERT EINSTEIN

*Importance for Prelims: Science and Tech*



Einstein received the 1921 Noble Prize in 1922, for “his services to Theoretical Physics, and particularly for his discovery of the law of the photoelectrical effect”.

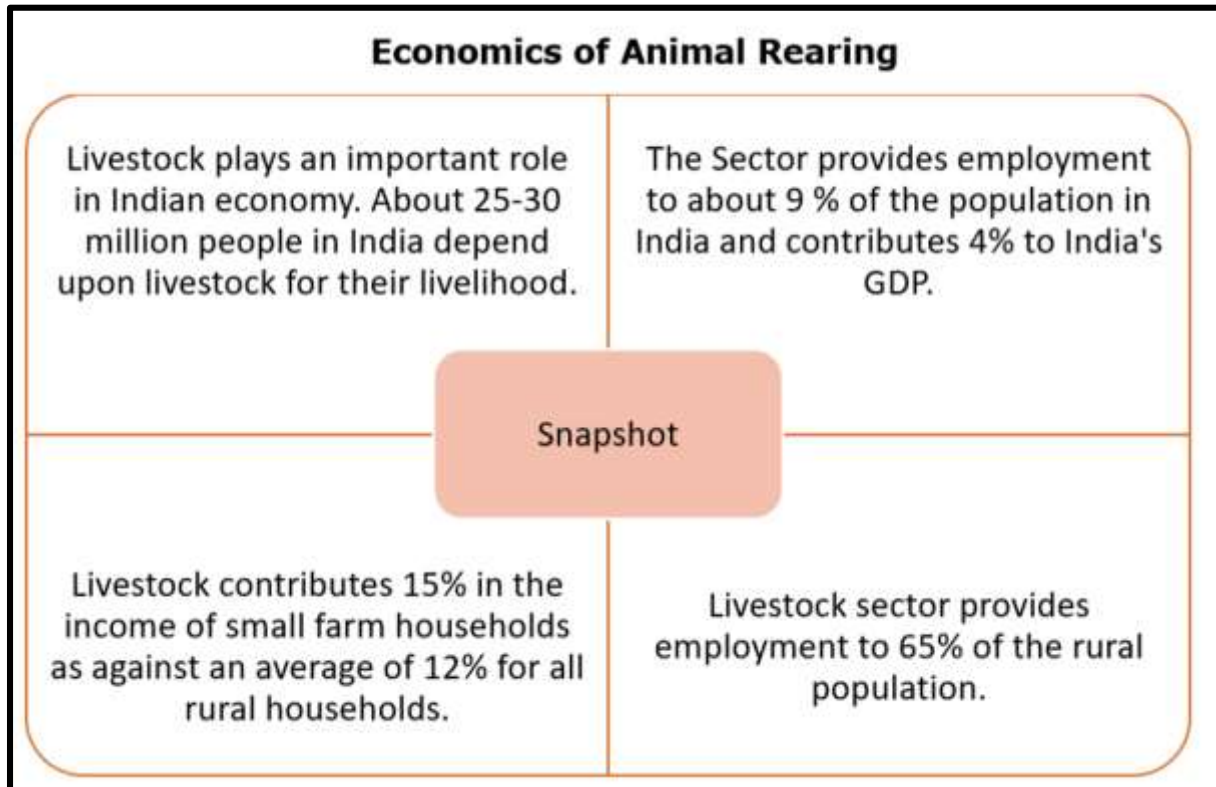
- ‘Annus Mirabilis’, or the Year of Miracles, is however 1905 is remembered by physicists as a result of Einstein, solely twenty six then, revealed four exceptional papers that year.
- One of them explained that light-weight was made from photons and once light-weight shone on metal, every photon’s energy related to electron’s speed on the metal’s surface.



- This redefined the composition of light and Einstein himself dubbed it revolutionary.
- It was for this that he received the laurels. Light, Einstein same, may be a beam of particles whose energies are unit associated with their frequencies consistent with Planck's formula.
- When that beam is directed at a metal, the photons collide with the atoms.
- If a photon's frequency is sufficient to knock off an electron, the collision produces the photoelectric effect.

## **Topic 23. SUB-MISSION ON FODDER AND FEED**

*Importance for Prelims: Agriculture*



A study by the Indian parcel and Fodder analysis Institute has determined that for each one hundred metric weight unit of feed needed, India is brief of twenty three.4 metric weight unit of dry fodder, 11.24 metric weight unit of inexperienced fodder, and 28.9 metric weight unit of concentrate feed.

- The Sub Mission on Fodder and Feed intends create|to form} a network of entrepreneurs World Health Organization can make feed (the hub) and sell them on to the farmers (the spoke).
- It is premised on the thought that the funding of the hub can cause the event of the spoke.
- The massive scale production of feed can bring down the input price for farmers since feed is far cheaper than concentrate feed.
- Studies have indicated that by growing fodder crops one will earn ₹1.60

by finance as compared to ₹1.20 within the case of common cereals like wheat and rice. non-public entrepreneurs, aid teams, farmer producer organisations, dairy farm cooperative societies, and Section eight firms (NGOs) will avail themselves of the advantages underneath this theme.

- The scheme will provide 50% capital subsidy up to ₹50 lakh towards project cost to the beneficiary for infrastructure development and for procuring machinery for value addition in feed such as hay/silage/total mixed ration.
- The theme is used for covering the value of infrastructure/machinery like bailing units, harvester, chaff cutter, sheds, etc.
- The revised theme has been designed with the objectives of accelerating productivity, reducing input prices, and doing away with middlemen (who sometimes take a large cut).

## Topic 24. ENFORCEMENT DIRECTORATE

*Importance for Prelims: Security*



ED attaches assets joined to ex- MLA.

- It may be a Multi-Disciplinary Organization mandated with the task of implementing the provisions of 2 special business enterprise laws – exchange Management Act, 1999 (FEMA) and hindrance of cash lavation Act, 2002 (PMLA).
- The origin of this board goes back to first could, 1956, once AN ‘Enforcement Unit ‘was shaped, in Department of Economic Affairs, for handling Exchange management Laws

violations below exchange Regulation Act, 1947 (FERA, 1947).

- In the year 1957, this Unit was renamed as 'Enforcement Directorate'.
- The body management of the board was transferred from Department of Economic Affairs to Department of Revenue in 1960.
- The board enforces 2 laws; FEMA, a Civil Law having quasi-judicial powers, for work suspected contraventions of the Exchange management Laws and laws with the powers to impose penalties on those adjudged guilty.
- PMLA, a Criminal Law, whereby the Officers are empowered to conduct enquiries to locate, provisionally attach/confiscate assets derived from acts of Schedules Offences besides arresting and prosecuting the Money Launderers.
- The ED has its headquarters in Indian capital and has several regional offices everywhere the country.
- Composition – Besides directly recruiting personnel, the board additionally attracts officers from totally different work Agencies, viz., Customs & Central Excise, Income Tax, Police, etc. on deputation.
- It is headed by the Director of social control, United Nations agency is associate agency officer (Indian Revenue Service). alternative functions: process cases of fugitive/s from Asian country underneath Fugitive Economic Offenders Act, 2018. Sponsor cases of preventive detention underneath Conservation of interchange and interference of importing Activities Act, 1974(COFEPOSA) in relation to contraventions of independent agency.
- **Special courts:** For the trial of associate offence punishable underneath section four of PMLA, the Central Government (in consultation with the magistrate of the High Court), designates one

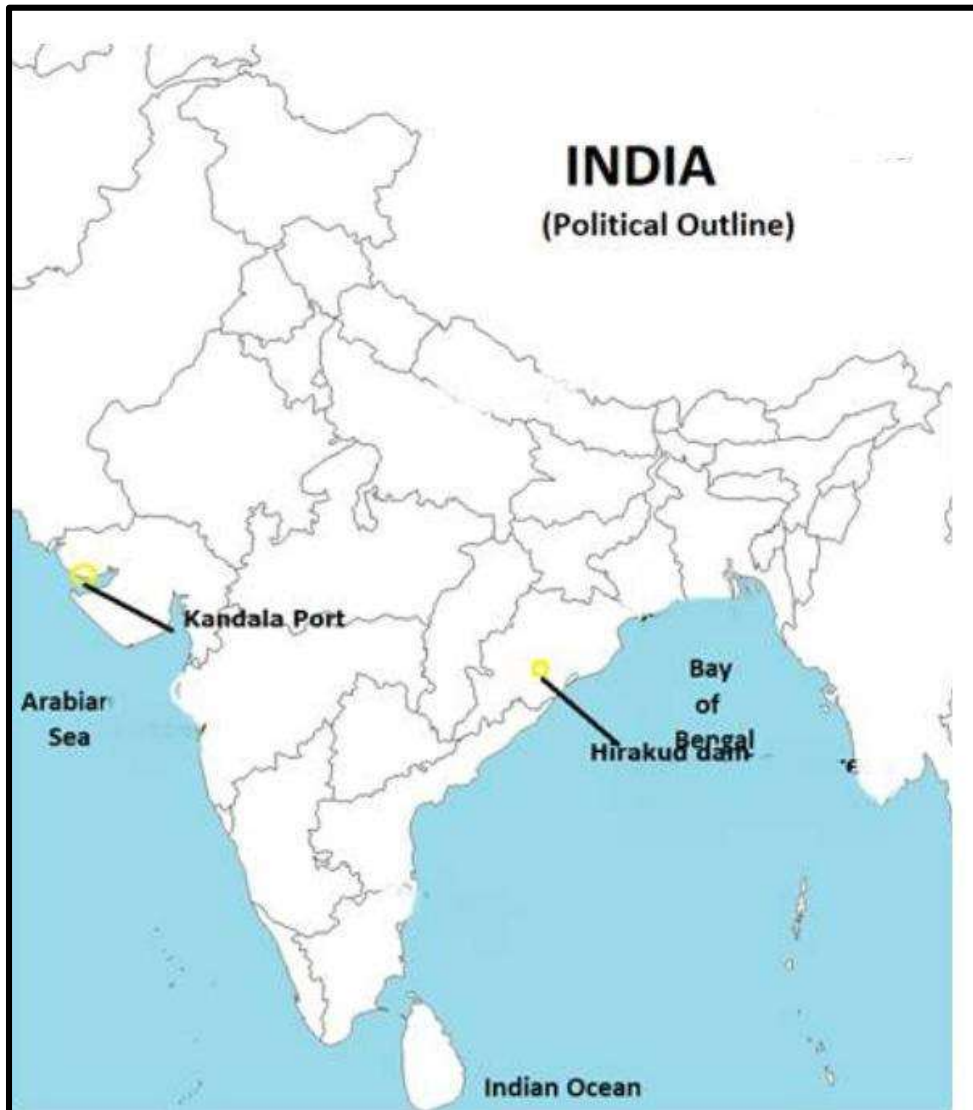
or additional Sessions Court as Special Court(s).The court is additionally referred to as “PMLA Court”.

- Any attractiveness against any order gone PMLA court will directly be filed within the tribunal for that jurisdiction.



## Topic 25. HIRAKUD RESERVOIR

*Importance for Prelims: Geography*



Odisha plans 'odyssey' to wild cattle island. Hirakud reservoir to open for ecotourism.

- It may be a useful theme planned by Er. M. Visveswaraya in 1937, once repeat of devastating floods in Mahanadi watercourse.
- Its initial hydro power was commissioned in 1956. Hirakud Dam is made across the Mahanadi watercourse, about to Sambalpur town in Odisha in Asian nation.
- **Type:** it's a composite structure of earth, concrete and masonry.

- It is that the longest major dam in Asian nation.

**Background:**

- It is one of the first major multipurpose river valley projects started after India's independence and began operations in 1957.
- With successful irrigation provided by the dam, Sambalpur is called the rice bowl of Odisha.
- Mahanadi River The Mahanadi River system is the third largest of peninsular India after Godavari and Krishna, and the largest river of Odisha state.
- The catchment area of the river extends to Chhattisgarh, Madhya Pradesh, Odisha, Jharkhand and Maharashtra.
- Its basin is finite by the Central Asian nation hills on the north, by the Japanese Ghats on the south and east and by the Maikala range on the west.
- Source -It rises from an area close to Sihawa in Bastar hills within the state of Chhattisgarh to the south of Amarkantak.
- Major Tributaries of the Mahanadi watercourse Seonath watercourse Hasdeo watercourse Mand watercourse Ib watercourse Jonking watercourse Tel watercourse

## Topic 26. MAHARAJA RANJIT SINGH

*Importance for Prelims: History*



Sikh emperor's statue vandalised in Pakistan.

- He was born on November 13, 1780 in Gujranwala, now in Pakistan.
- At that point, geographical region was dominated by powerful chieftains World Health Organization had divided the territory into Misl (refers to the sovereign states of the Sikh Confederacy, that rose throughout the eighteenth century within the geographical region within the northern a part of the Indian landmass when the collapse of the Mughal Empire).
- Ranjit Singh overthrew the warring Misls and established a unified Sikh empire.
- He was given the title Lion of geographical region (Sher-e-Punjab) for his

success in releasing city (his capital) from the Afghan invaders.

- Modernization of Army He combined the strong points of the traditional Khalsa army with western advances in warfare to raise Asia's most powerful indigenous army of that time.
- He extensively utilized an outsized range of European officers, particularly French, to coach his troops.
- He appointed French General Jean Franquis Allard to modernize his army.
- Wide Empire Ranjit Singh's trans-regional empire (spread over many states) enclosed the previous Mughal provinces of city and Multan besides a part of national capital and also the entire metropolis.
- The boundaries of his state went up to Ladakh— within the northeast, pass (route the foreign rulers took to invade India) within the northwest, and up to Panjnad within the south wherever the 5 rivers of geographic region fell into the Indus. The maharajah was notable for his simply and laic rule.
- Both Hindus and Muslims got powerful positions in his darbar.
- He turned Harimandir European at Amritsar into the Golden Temple by covering it with gold.
- He is additionally attributable with funding Hazoor European gurudwara at the ultimate resting place of Guru Gobind Singh in Nanded, geographic region.
- His throne is displayed conspicuously at the Victoria and Albert repository in London.

## Topic 27. SMALL FINANCE BANK

*Importance for Prelims: Economy*



Small finance banks area unit meeting inclusion objectives, and should continue their differentiated model.

- Small Finance Banks area unit the monetary establishments which offer monetary services to the unserved and unbanked region of the country.
- They area unit registered as a public Ltd. beneath the businesses Act, 2013.
- Small Finance Banks area unit ruled by the provisions of the: Banking Regulation Act, 1949; depository financial institution of Republic of India Act, 1934; interchange Management Act, 1999; Payment and Settlement Systems Act, 2007; Credit info firms (Regulation) Act, 2005; Deposit Insurance and Credit Guarantee Corporation Act, 1961; different relevant Statutes and also the Directives, prudent rules and different Guidelines/Instructions issued by depository financial institution of Republic of India (RBI)

and different regulators from time to time.

- SFBs will be given scheduled bank status once they commence their operations, and found suitable as per Section 42 of the Reserve Bank of India Act, 1934.
- Differentiated Banks vs. Universal Banks There are two kinds of banking licences that are granted by the Reserve Bank of India – Universal Bank Licence and Differentiated Bank Licence.
- Differentiated Banks (niche banks) are unit banks that serve the wants of a particular demographic section of the population.
- Small Finance Banks and Payment Banks are unit samples of differentiated banks in Republic of India.
- Differentiated banks are unit distinct from Universal Banks (Eg: business Banks like SBI, HDFC, ICICI etc) as they're infused as niche segments. Niche banks usually target a selected market and tailor the bank's operations to the current target market's preferences.
- The differentiation might be on account of capital demand, the scope of activities or space of operations.
- As such, they offer a limited range of services/products or function under a different regulatory dispensation.
- As such, they offer a limited range of services/products or function under a different regulatory dispensation.



## Topic 28. COLORADO RIVER BASIN

*Importance for Prelims: Geography*



US government has declared water shortage for the Colorado geographical area for the primary time.

- The Colorado River flows from the Rocky Mountains into the south-western US and into Mexico.
- The stream is fed by snowmelt from the Rocky and Wasatch mountains and flows a distance of over a pair of,250 metric linear unit (river Ganga flows through a distance of roughly a pair of,500 km) across seven states and into United Mexican States.
- The Colorado geographical area is split into the higher (Wyoming, Colorado, New Mexico, Utah and northern Arizona) and Lower Basins (parts of Silver State, Arizona, California, southwestern Utah and western

New Mexico).

- In the Lower Basin, the Hoover Dam controls floods and regulates water delivery and storage.
- Apart from the dyke, there's the Davis Dam, Parker Dam and also the Imperial Dam that regulate the discharge of water from the dyke.
- The river drains a vast arid and semiarid sector of the North American continent, and because of its intensive development it is often referred to as the “Lifeline of the Southwest.”
- Major lakes in its basin Lake Mead is the largest reservoir in the US in terms of volume and was formed in the 1930s by the Hoover Dam in Southern Nevada.
- Its main source of water is obtained from the Rocky Mountain snowmelt and runoff.
- The other is Lake Powell, the reservoir created by the Glen Canyon Dam in Arizona.
- Reason for shortage – Since the year 2000, this geographical area has been experiencing a chronic drought.

## Topic 29. 180nm CMOS

*Importance for Prelims: Science and Technology*

Parameter	NMOS	PMOS
$V_{ov}$	90 mV	90 mV
$V_{THN}$ and $V_{THP}$	457 mV	463 mV
$V_{GS}$ and $V_{SG}$	547 mV	553 mV
$V_{DS,sat}$ and $V_{SD,sat}$	60 mV	60 mV
Bias Current $I_D$	20 $\mu A$	20 $\mu A$
W/L	28/2	86/2
$g_{mn}$ and $g_{mp}$	285 $\mu A/V$	260 $\mu A/V$
$\gamma_{on}$ and $\gamma_{op}$	314 K $\Omega$	437 K $\Omega$

India's Milestone in Semiconductor R&D, IIT urban center demonstrates Memory Technology on 180nm CMOS method

- The natural world is analog while computing is digital.
- Computers understand the plants through detector chips whose output is analog.
- The analog output is converted into the language of computers through a digitizer chip or an analog to digital converter (ADC).
- The generic chips will currently be styled and application-specific offsets intercalary to form pricey custom chip design redundant, saving time and cash for the user.
- IIT Bombay partnered with SCL to successfully demonstrate CMOS

180nm based production-ready 8-bit memory technology.

- The 180 nm process refers to the level of MOSFET (CMOS) semiconductor process technology that was commercialized around the 1998–2000 timeframe by leading semiconductor companies. The Government of India took cognizance of the significance of R&D in innovation driven semiconductor manufacturing, at IIT Bombay and the Indian Institute of Science.
- The team at IIT urban center was supported by the Department of Science and Technology's Intensification of analysis in High Priority space (IRHPA).
- Aspects of the work were funded by MeitY/DST's Nano electronics Network for Research and Applications (NNetRA) Advantage of CMOS 180nm.
- The chip uses one-time programmable (OTP) memory supported ultra-thin deposited oxide (a few atoms thick) rather than the present gate oxide-based OTP technology.
- In distinction to the high voltage needed by gate compound breakdown (a standard OTP memory), IIT Bombay's micro chip needs less power and chip-area because the want for boosted voltage provide is avoided.
- The Memory technology is critical to data security.
- It will be a game changer by enabling secure memory and encryption hardware for the country

## Topic 30. TUMAKURENSE

*Importance for Prelims: Environment*



New plant found in Tumakuru takes the district's name.

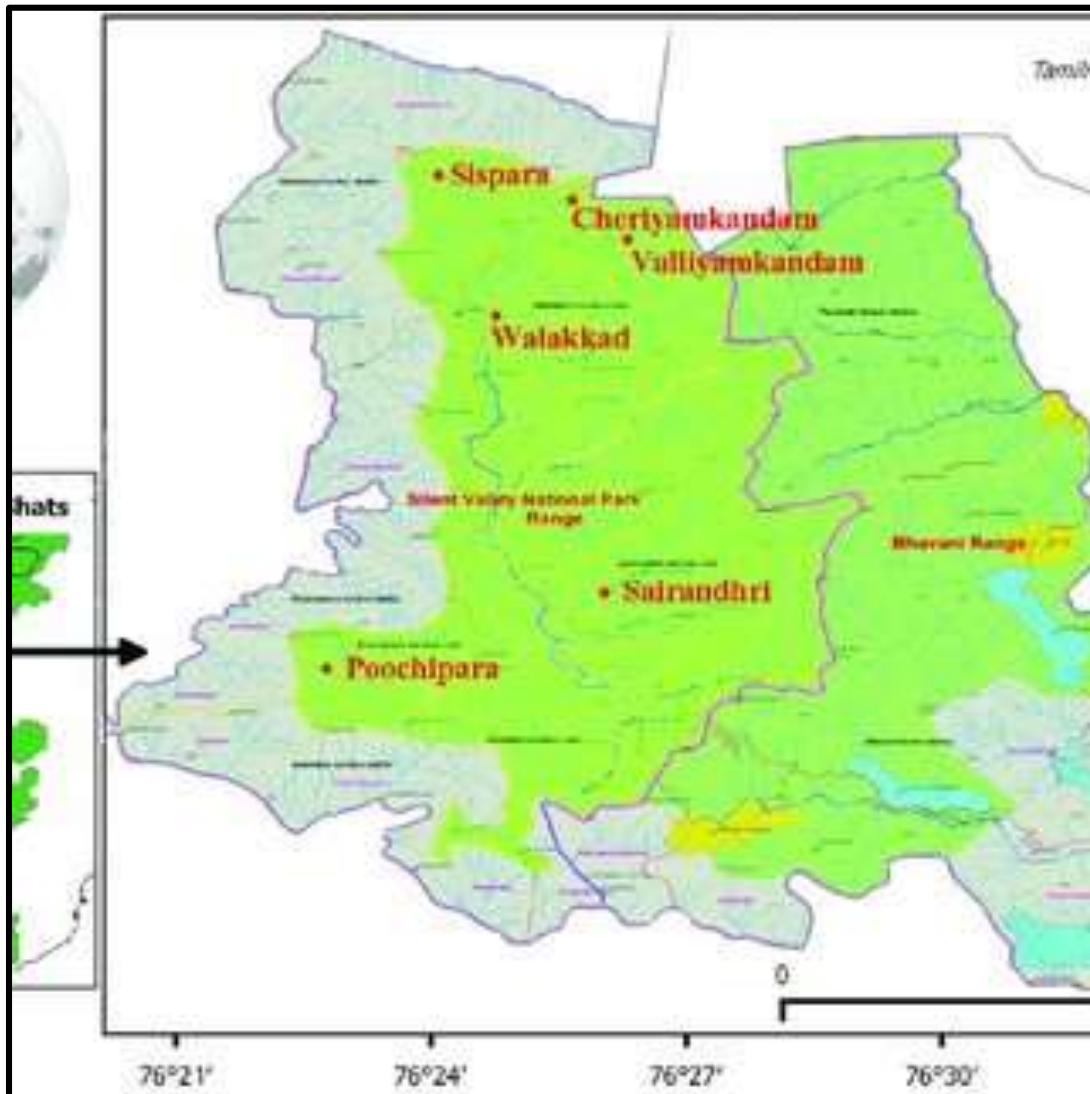
- A new plant of the *Brachystelma* R.Br. species has been found in Tumakuru, and has been named once the district from wherever its sort material was collected. '*B. tumakurense*' comes from a tuber and belongs to the Apocynaceae family (a family of flowering plants).
- *Brachystelma* R.Br. is that the second largest genus within the tribe Ceropegieae with over 116 species distributed within the old-world tropics.
- They are slender stemmed with a brilliant display of colours in their flowers, especially in their corolla and coronal structures.

- They are mainly distributed in Peninsular India in dry hill ranges.
- There are seven species from Karnataka.
- All of them exhibit erect stems and are non-climbing in nature.



## **Topic 31. PEECHI-VAZHANI WILDLIFE SANCTUARY**

*Importance for Prelims: Environment*



A moderate earthquake of 3.3 magnitudes on the Richter scale was reported in the Peechi- Vazhani Wildlife Sanctuary areas of Thrissur district.

- Headquartered in Peechi, Thrissur District of Kerala, India.
- The sanctuary was established in 1958 consisting of Palappilli-Nelliampathi forests including the area of Chimmony Wildlife sanctuary and is the second oldest sanctuary in Kerala.
- Kuthiran Tunnel, first road tunnel in Kerala, runs through the Peechi-Vazhani wildlife sanctuary.

## **Topic 32. TIWA TRIBES**

### ***Importance for Prelims: Geography***

The tribe Tiwas (Lalungs) lives each within the hills and plains of province and Meghalaya state.

- Tiwa suggests that folks that were raised from below.
- They square measure recognized as a regular tribe among the State of province. Wanchuwa pageant is widely known by Tiwa tribe to mark their sensible harvest.
- The hill Tiwa villagers square measure habitual to the Jhum cultivation, farming, vegetables and therefore the crops that square measure arable within the space.
- They speak a Tibeto Burman language.

### **Topic 33. NATIONAL EDIBLE OIL MISSION – OIL PALM (NMEO-OP)**

#### ***Importance for Prelims: Environment***

Centre to spice up feather palm farming.

- Current state of affairs India's import bill of edible oils can high high.20-lakh large integer this year from ₹75,000 large integer last year.
- According to ocean, the country has three 100000 hectares of land underneath feather palm cultivation, manufacturing around a pair of.80 100000 tonnes of crude vegetable oil (CPO) a year.
- There may be a potential to bring one.9 million hectares of land.
- It had urged the government to target additional 5 lakh hectares in the next five years India currently depends on imports for nearly two thirds of edible oil used in the country.
- "Palm oil accounts for nearly fifty five per cent of edible oil foreign by Bharat. National Edible Oil Mission – feather palm (NMEO-OP) this is often an enormous step for feather palm development within the country and towards 'Atmanirbhar Bharat' in edible oil Prime Minister Narendra Modi launched a ₹11,000 large integer National Edible Oil Mission-Oil Palm (NMEO-OP) to create Bharat autonomous in edible oils.
- The NMEO proposal would aim to reduce import dependence from 60% to 45% by 2024-25, by increasing domestic edible oil production from 10.5 million tonnes to 18 million tonnes, a 70% growth target.
- It projected a 55% growth in oilseed production, to 47.8 million tonnes. Oil palm is a long-gestation crop.
- Oil palm produces 10 to 46 times more oil per hectare compared to other oilseed crops, The government will ensure that farmers get all needed facilities, from quality seeds to technology.
- Along with promoting the cultivation of feather palm, this

mission will expand the cultivation of our different ancient seed crops. The NMEOP's precursor was the National Mission on Oil Seeds and feather palm, that was launched at the tip of the UPA government's tenure and later incorporate with the National Food Security Mission.

- Laying out its achievements, oilseed production had grown 35% from 27.5 million tonnes in 2014-15 to 37.3 million tonnes by 2020-21.
- Although oilseed acreage rose only 8.6% over that six year period, yields rose more than 20%.
- This is that the 1st time the Centre can provide feather palm farmers a value assurance, with business mandated to pay the viability gap funding of fourteen.3% of crude oil costs.
- In a bid to encourage feather palm cultivation in north – japanese Bharat and within the Andaman and Nicobar islands, the Centre can bear an extra price of twenty-two of the crude oil costs in these States.
- The theme features a sunset clause, ending Allhallows, 2037.
- Oil Seed Bharat is one in every of the most important oilseeds agriculturist and bourgeois of edible oils. India's edible fat economy is world's fourth largest when USA, China & Brazil.
- The oilseed accounts for 13% of the Gross Cropped Area, 3% of the Gross National Product and 10% value of all agricultural commodities (Less than four lakh hectares are currently planted with oil palm).
- The various agro-ecological conditions within the country area unit favourable for growing nine annual seed crops, that embrace seven edible oilseeds (groundnut, oilseed & mustard, soybean, sunflower, sesame, false saffron and niger) and 2 non-edible oilseeds (castor and linseed).

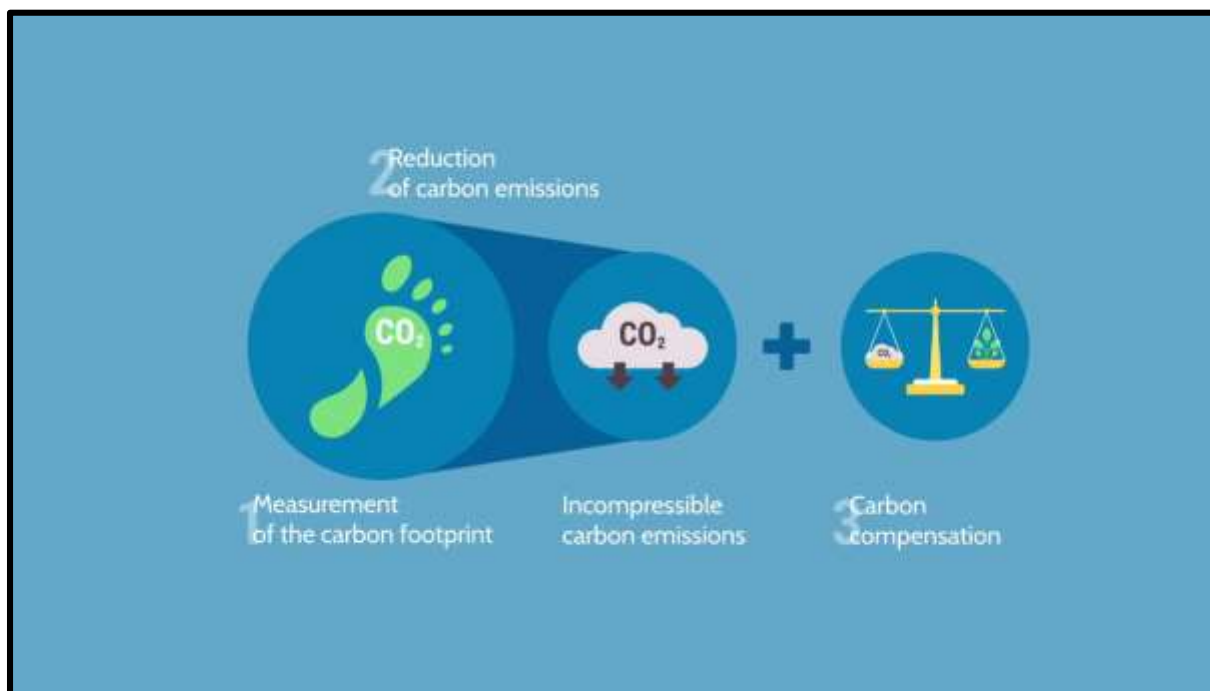
- Oilseeds cultivation is undertaken across the country in about 27 million hectares mainly on marginal lands, of which 72% is confined to rainfed farming.
- Main oil-seeds made in Bharat area unit groundnut, mustard, coconut, Sesamum (til), Soyabean, castor seeds, cotton seeds, flaxseed and flower.
- Groundnut is a kharif crop and accounts for about half of the major oilseeds produced in the country.
- Major states Gujrat, Madhya Pradesh, Rajasthan, Gujrat, Maharastra, UP  
The policy impetus to oilseed production in India came for the first time in 1986 when the government launched Technology Mission on Oilseed.
- This was a golden amount for seed production in Bharat once productivity jumped from 670 kilo per square measure within the eighties to 835 kilo per square measure within the nineties.
- To achieve self-sufficiency in edible oils production the government has launched several policy initiatives since the mid-1980s.
- They chiefly embrace provide of high yielding seed cultivars, extension services and subsidized inputs; giving of minimum support costs (MSP); fixation of value band; import controls via canalisation; and promotion of feather palm cultivation.
- The outcomes of those initiatives, called “Yellow Revolution”, were extremely encouraging. Between 1985 and 1994 the expansion rate of space, production and yield of oilseeds hyperbolic considerably.
- As a result, the proportion of foreign edible oils in total edible oil convenience declined from twenty six.72 per cent in 1985 to two.17 per cent in 1993, thereby creating Bharat virtually independent in edible boring seed crops area unit the second most significant determinant

of the agricultural economy, next solely to cereals inside the phase of field crops.



## Topic 34. CARBON NEUTRALITY

*Importance for Prelims: Environment*



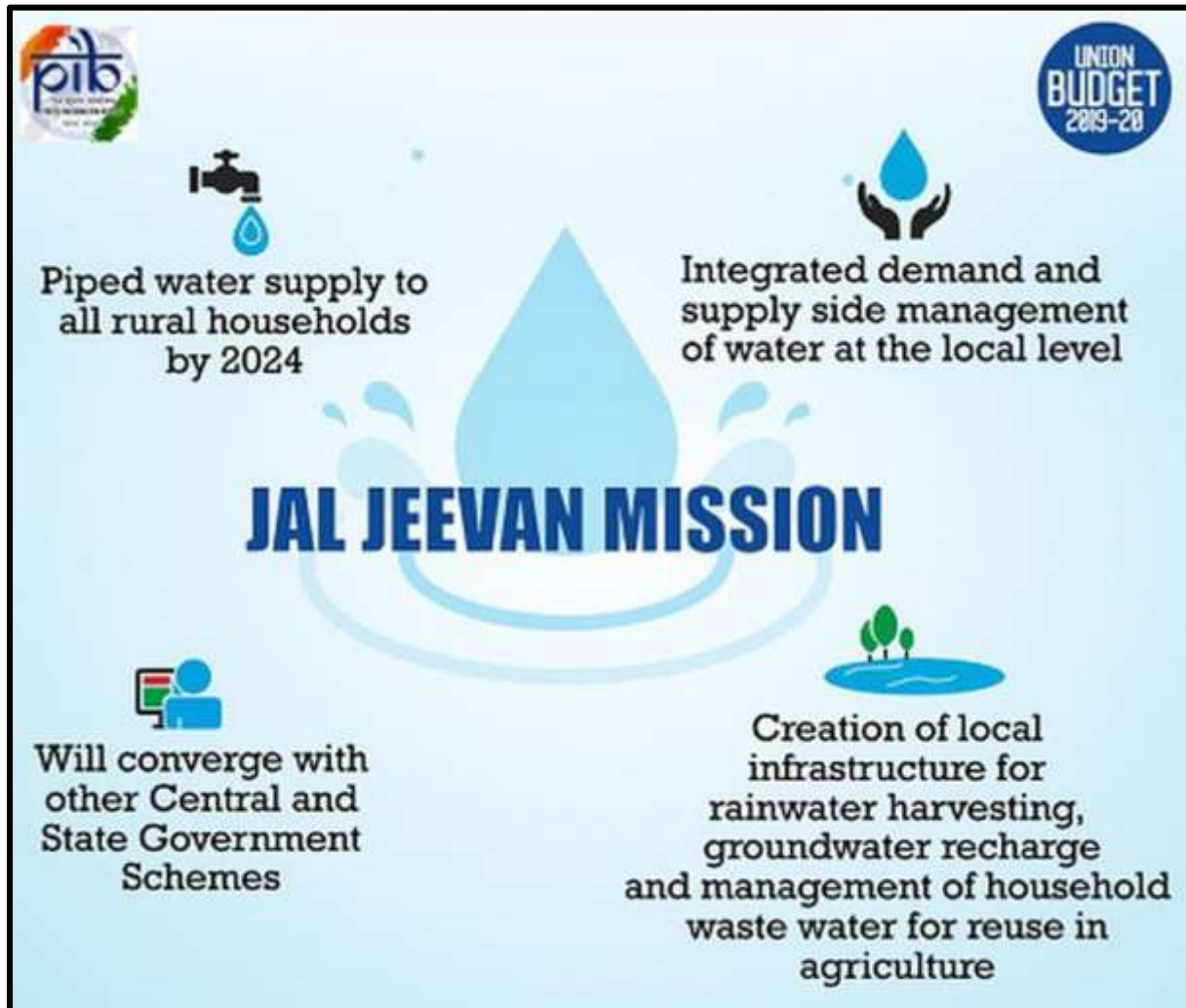
India will do additional, hints climate official.

- Climate neutrality is achieved once a country's emissions area unit balanced by absorptions and removal of greenhouse gases from the atmosphere.
- It is additionally expressed as a state of net-zero emissions. internet zero or carbon neutrality is once additional carbon is sucked out from the atmosphere or prevented from being emitted than what a rustic emits and is important to making sure that the earth doesn't heat up an extra 0.5 a degree by 2100.
- Bhutan and South American nation area unit the sole carbon neutral countries within the world. Countries that have declared net-zero Target.
- (Some Examples): the eu Union features a set up, referred to as "Fit for 55", to deliver the carbon neutrality goal. China conjointly declared that it might become net-zero by the year 2060 which it might not permit its emissions to peak on the far side what they're in 2030.

- The International Energy Agency's (IEA) has free its internet Zero Emissions (NZE) Roadmap – named 'Net Zero by 2050'.

## Topic 35. JAL JEEVAN MISSION

*Importance for Prelims: Governance*



In the two years since the ambitious Jal Jeevan Mission was launched by the Modi government, Bihar has performed the best in providing rural tap water connections. The state has gone from being among the bottom five in terms of rural tap water supply (with only 1.84% households having connections), to among the top four (86.96%).

- Jal Jeevan Mission (JJM) envisages provide of fifty five litres of water per person per day to each rural home through useful home faucet Connections (FHTC) by JJM focuses on integrated demand and supply-side management of water at the native level.

- Creation of local infrastructure for source sustainability measures as mandatory elements, like rainwater harvesting, groundwater recharge and management of household wastewater for reuse, would be undertaken in convergence with other government programmes/schemes.
- The Mission relies on a community approach to water and includes intensive info, Education and Communication as a key part of the mission.
- JJM appearance to form a janandolan for water, thereby creating it everyone's priority.
- **Funding Pattern:** The fund sharing pattern between the Centre and states is 90:10 for Himalayan and North-Eastern States, 50:50 for other states, and 100% for Union Territories.

## **Topic 36. SUGARCANE**

### ***Importance for Prelims: Agriculture***

sugarcane costs static for four years in geographic region

- In India, Sugarcane is grown up as a Kharif Crop. It wants hot and wet climate with a mean temperature of 21°C to 27°C. 75-150 cm rain is favourable for sugar cane cultivation. Irrigation required for areas with lesser rain.
- Sugarcane can grow in any soil which can retain moisture.
- Ideal soil for sugarcane is deep rich loamy soil.
- The soil needs to be rich in nitrogen, calcium and phosphorus but neither it should be neither too acidic nor too alkaline.
- Sugar Industry's Location in Asian nation Sugar business is broadly speaking distributed over 2 major areas of production— Uttar Pradesh, Bihar, Haryana and geographic region within the north and Maharashtra, Karnataka, province and state within the south.
- South {india|India|Republic of Asian nation|Bharat|Asian country|Asian nation} has tropical climate that is appropriate for higher saccharose content giving higher yield per unit space as compared to north India.

## Topic 37. KIGALI AMENDMENT TO THE MONTREAL PROTOCOL

### *Importance for Prelims: Environment*

Cabinet approves Ratification of Kigali Amendment to the Montreal Protocol on Substances that Deplete the Ozone Layer for phase down of Hydro fluorocarbons.

- The Kigali agreement is an amendment to the Montreal Protocol. It aims to phase down hydro fluorocarbons (HFCs) by curbing both their production and consumption.
- **Target:** To achieve over 80% reduction in HFC consumption by 2047 which will curb a global increase of temperature by up to 0.5 degrees Celsius by the end of the century.
- **India:** India will complete its phase-down of HFCs in four steps from 2032 onwards with a cumulative reduction of 10% in 2032, 20% in 2037, 30% in 2042 and 80% in 2047.
- Hydro fluorocarbons HFCs are entirely man-made.
- They square measure primarily created to be used in refrigeration, air-conditioning, insulating foams and aerosol propellants, with minor uses as solvents and for fireplace protection.
- HFCs were developed to replace stratospheric ozone-depleting substances (ODS) that are currently being phased out under the Montreal Protocol on Substances that Deplete the Ozone Layer.
- Though HFCs don't impact the layer, several HFCs square measure terribly powerful greenhouse gases and a considerable variety square measure impermanent climate pollutants with a period of time of between fifteen and twenty nine years within the atmosphere.
- Implementation strategy of India to phase out HFCs
  1. National strategy for phase down of Hydro fluorocarbons will be



developed after required consultation with all the industry stakeholders by 2023.

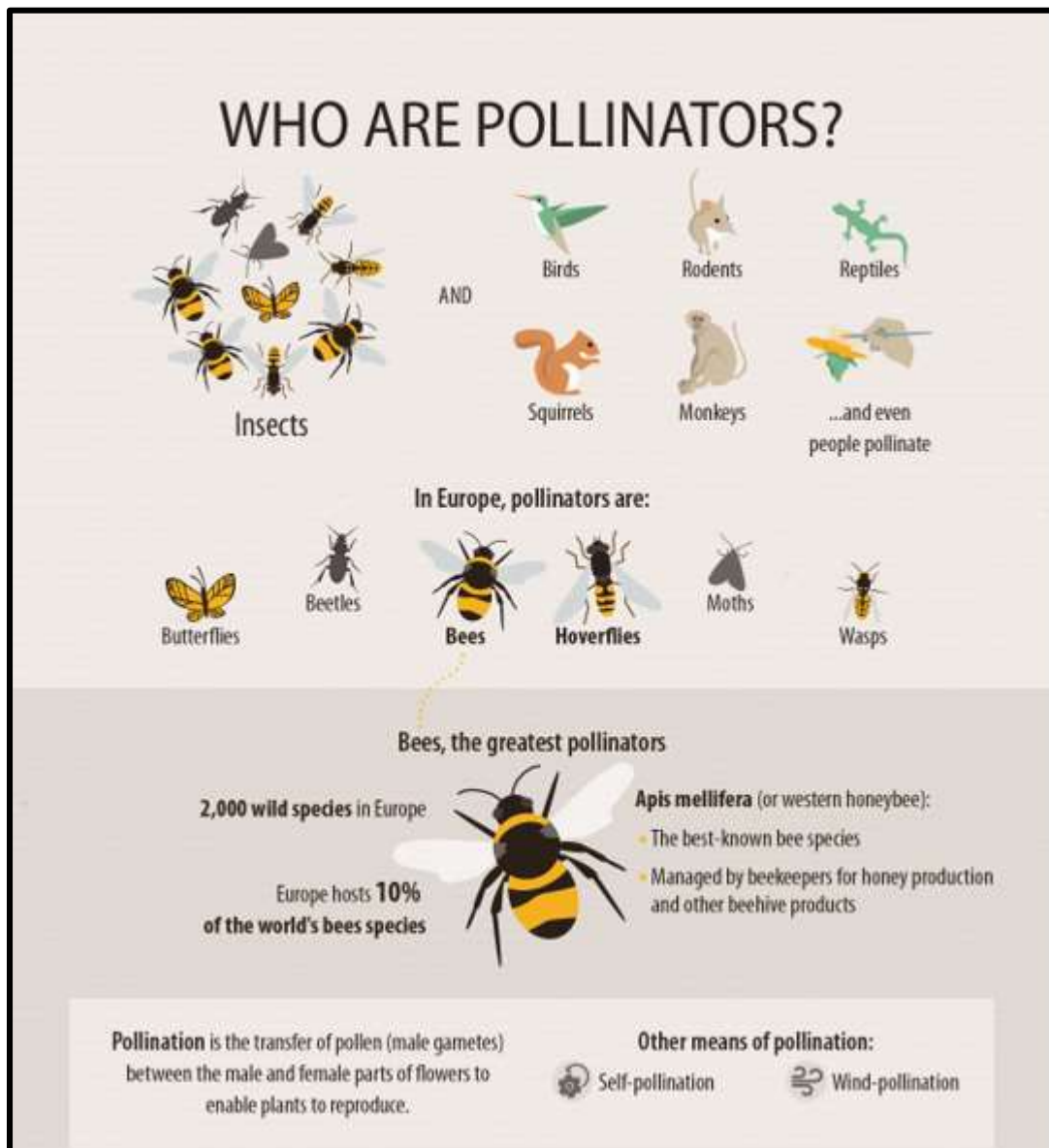
2. Ozone Depleting Substances (Regulation and Control) Rules will be amended to allow appropriate control of the production and consumption of Hydro fluorocarbons to ensure compliance with the Kigali Amendment will be done by mid-2024.

### **Montreal Protocol –**

- The city Protocol on Substances that wipe out the ozonosphere, is a world environmental accord for defense of the ozonosphere by phasing out the assembly and consumption of synthetic chemicals said as gas depleting substances (ODS).
- The stratospheric ozone\ layer protects humans and the environment from harmful levels of ultraviolet radiation from the sun.
- India became a celebration to the city Protocol on Substances that wipe out the ozonosphere on nineteen Gregorian calendar month 1992 and since then has sanctioned the amendments to the city Protocol.
- Through the present approval of the Cabinet, India will be ratifying the Kigali Amendment to the Montreal Protocol for phase down of Hydro fluorocarbons.
- India has with success met the end targets of all the gas Depleting Substances as per the city Protocol Schedule.

## Topic 38. DECLINING POLLINATORS

*Importance for Prelims: Environment*



Instability in yield of pollinator-dependent crops a 'serious' or 'high risk' in geographical area, Asia, Africa and Oceania.

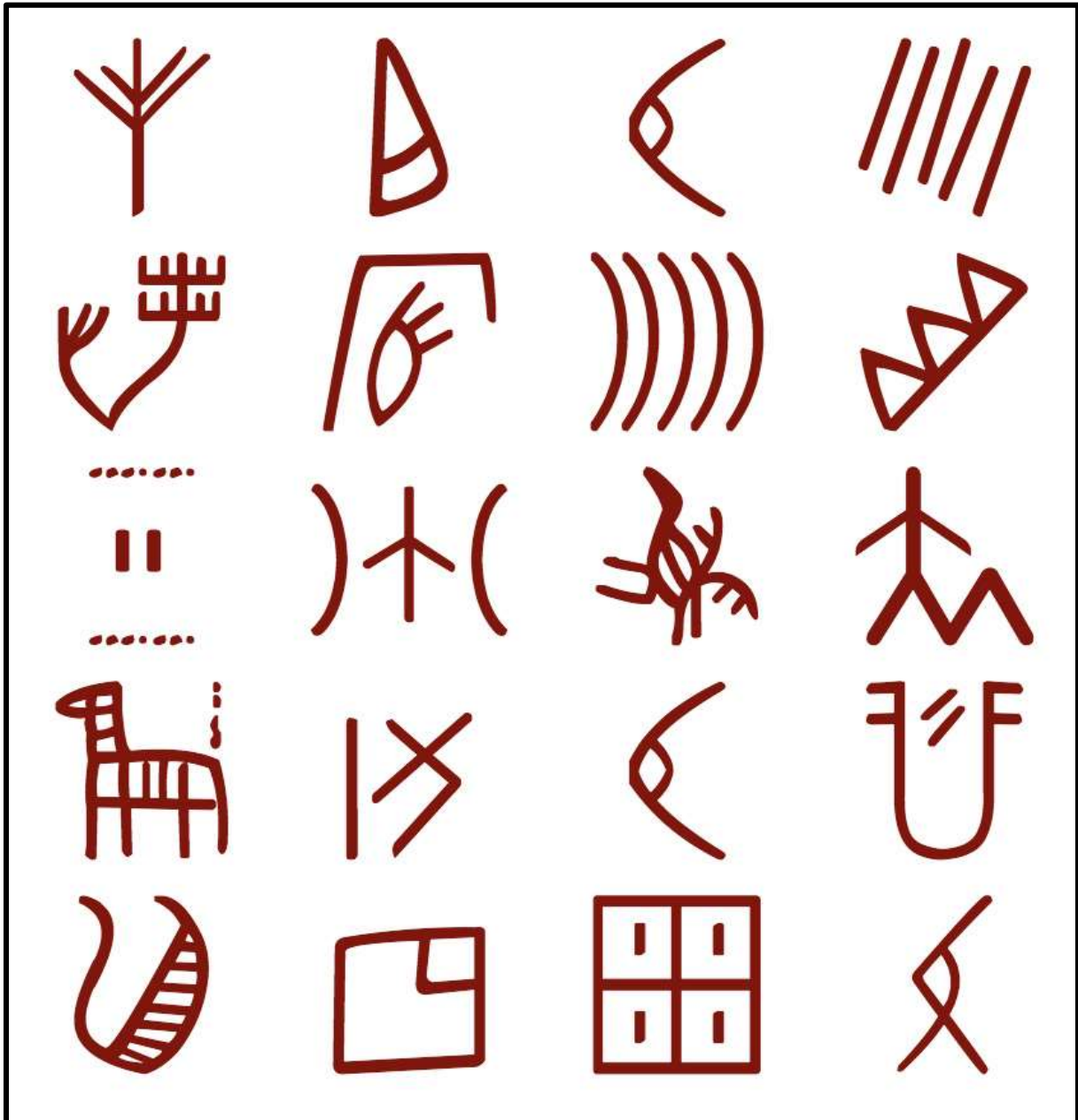
- World's diverseness faces a risk from a discount of pollinators — bees, butterflies, birds, bats, etc.
- It seems that the risk is greater for most of the developing world, including Africa.
- **This casts a darker shadow on livelihoods:** Rural populations in low-

income countries are dependent on wild-growing foods.

- And the loss of pollinators poses risks to wild plants and fruits.
- Around 40 per cent of the invertebrate pollinator species, particularly bees and butterflies, face extinction across the world, according to a report by Food and Agriculture Organization.
- This is particularly regarding for Africa and therefore the Asia-Pacific, wherever pollinated crops square measure of notable biological process and value to livelihoods and well-being.
- These findings are all the more significant because pollinator-dependent food production increased 300 per cent over the past half century, according to the 2016 Assessment Report by Intergovernmental Science-Policy Platform on Biodiversity and Ecosystem Services.
- Destruction of home ground, improper land-use like grazing, fertilisers and crop monoculture of farming, along side high chemical use are known because the leading causes behind the declining pollinators.
- Climate change ranks as the fourth cause behind declining pollinators.

## Topic 39. LANGUAGE IN INDUS VALLEY CIVILISATION

*Importance for Prelims: History*



A new analysis paper printed within the peer-reviewed journal of the Springer Nature cluster has provided some fascinating new insight on the linguistic culture of the Harappans.

- The Indus depression script is nonetheless to be deciphered.
- The paper derived their language roots to proto-Dravidian, that is that the ancestral language of all the trendy Dravidian languages.

- Thereafter the paper suggested that speakers of ancestral Dravidian languages had a greater historic presence in northern India including the Indus Valley region from where they migrated.
- There were thriving trade relations between the Indus depression Civilisations (IVC) and also the gulf also as geographic area. Akkadian – language spoken in ancient geographic area.
- Indus Valley Civilisation –The history of India begins with the birth of the Indus Valley Civilization (IVC), also known as Harappan Civilization.
- It flourished around 2,500 BC, in the western part of South Asia, in contemporary Pakistan and Western India.
- The Indus depression was home to the most important of the four ancient urban civilizations of Egypt, geographic area, Asian country and China.
- In 1920s, the archeologic Department of Asian country administered excavations within the Indus depression whereby the ruins of the 2 recent cities, viz. Mohenjo-Daro and Harappa were unearthed.
- In 1924, John Marshall, Director-General of the ASI, announced the discovery of a new civilisation in the Indus valley to the world.
- **Three phases of IVC are:** the Early Harappan Phase from 3300 to 2600 BCE, the Mature Harappan Phase from 2600 to 1900 BCE, and the Late Harappan Phase from 1900 to 1300 BCE.
- The IVC declined around 1800 BCE however the particular reasons behind its end square measure still debated.



## **Topic 40. NEW SPECIES OF FROG IN ARUNACHAL PRADESH**

*Importance for Prelims: Environment*



Delhi University scientists discover new species of frog in Arunachal Pradesh.

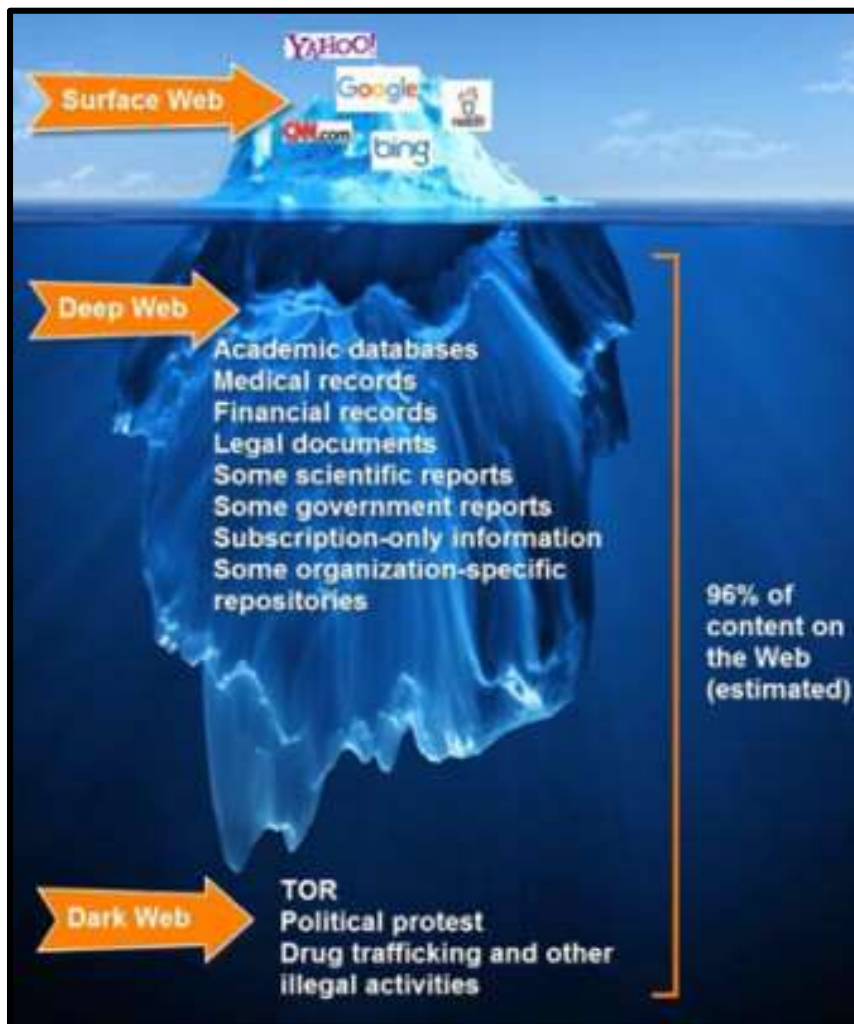
- Discovered on the Adi hills in Arunachal Pradesh, the new frog species has been named Adi Cascade Frog (*Amolops Adicola*). The hills area unit home to the Adi tribe.
- The literal which means of Adi is “hill” or “mountain top”.
- Adi hills were traditionally called Mirish hills. Cascade frogs area unit named thus attributable to their preference of little waterfalls or cascades in flowing hill streams.
- Adi Tribe – The Adi people are one of the most populous groups of indigenous peoples in the Indian state of Arunachal Pradesh.
- A few thousand are also found in the Tibet Autonomous Region (Previously Tibet) where they are called the Lhoba.
- The Adi tribe of Arunachal Pradesh is believed to have come from southern China in the 16th century they are the Tibeto-Burman language speaking population.



- They reside within the way north inhabiting East Siang and Lower Dibang natural depression districts of Arunachal Pradesh.
- The Adis area unit specialists at creating cane and bamboo things. Solung (harvesting pageant wherever animal sacrifices and rituals area unit performed) and Aran (a searching pageant wherever all the male members of the family select hunting) area unit 2 major festivals of the Adi tribes.
- Popir is that the autochthonous dance of the Adi tribe.

## Topic 41. DARK WEB

*Importance for Prelims: Science and Tech*



Scouring dark internet helps Bengaluru Police in suppression on narcotraffic.

- The dark web or dark internet is an overlay network inside the web that isn't accessible through search engines, and wherever anonymous activities are unit metered out.
- For this reason, a market for illegal activities thrives here, including the sale and purchase of drugs, stolen data, hacking software, pornography etc.

**Internet consists of three layers:**

- **The first layer** is public (Surface Web), consisting of sites that one uses frequently such as Facebook, Twitter, Amazon and LinkedIn.

- This layer makes up only 4% of the entire internet.
- **The second layer**, the deep web, is a network where data is stored in inaccessible databases (i.e., cannot be accessed through traditional search engines like Google).
- 
- It is employed to supply access to a selected cluster of individuals. {the knowledge|the info|the information} is mostly sensitive non-public|and personal} (government private data, bank data, cloud knowledge etc.), thus unbroken out of reach.
- The third layer is that the dark web that is additionally referred to as a section of the 'Deep Web'. it's a network designed over the web that is encrypted. it's essentially a layer of the web accessible solely by victimisation special computer code like Tor (The Onion Router), or I2P, that stands for Invisible net Project.
- Anything gift on the dark internet won't be force up in net searches, thereby providing a high degree of namelessness.

## **Topic 42. LONDON INTER-BANK OFFER RATE (LIBOR)**

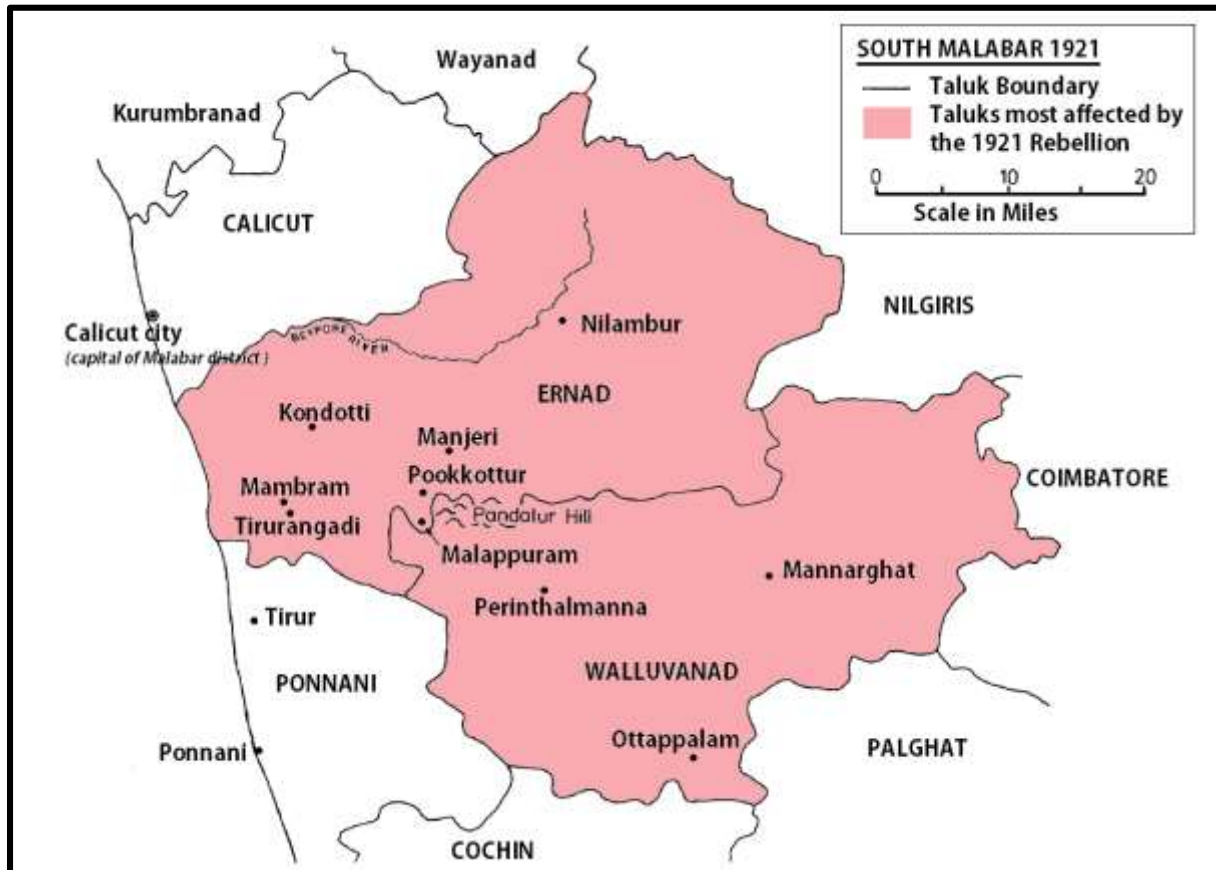
### ***Importance for Prelims: Economy***

LIBOR transition are going to be a posh exercise.

- LIBOR is that the most typical benchmark rate of interest index used for company and Government Bonds, mortgages, student loans, credit cards, derivatives and different money merchandise.
- LIBOR may be a benchmark rate of interest at that major world banks lend to at least one another within the international interbank marketplace for short loans.
- LIBOR is a globally accepted key benchmark rate of interest that indicates borrowing prices between banks.
- The rate is calculated and can still be printed on a daily basis by the intercontinental Exchange (ICE), however thanks to recent scandals and queries around its validity as a benchmark rate, it's being phased out.
- It serves for maturities from nightlong to one year and on on a daily basis there square measure thirty five completely different LIBOR rates printed by British Bankers Association (BBA).
- LIBOR is presently administered by ICE Benchmark Administration (IBA) and is regulated by the UK's money Conduct Authority (FCA).
- According to the Federal Reserve and regulators in the UK, LIBOR will be phased out by June 30, 2023, and will be replaced by the Secured Overnight Financing Rate (SOFR).

## Topic 43. MAPILLA RIOTS

*Importance for Prelims: History*



The trigger of the revolt came from the Non-Cooperation Movement launched by the Congress in 1920 beside the Khilafat agitation.

- The anti-British sentiment fuelled by these agitations affected the Muslim Mapillahs (also referred to as Moplahs) of south Malabar region of latest residence Laws: when the death of yellow jacaranda grand Turk in 1799 within the Fourth Anglo Mysore War, Malabar had return underneath British authority as a part of the Madras Presidency.
- The British had introduced new residence laws that staggeringly favoured the landlords referred to as Janmis and instituted a way more exploitative system for peasants than before.
- The new laws underprivileged the peasants of all secure rights to the land,

share within the manufacture they earlier got and in impact rendered them landless.

- **The Communal Angle:** Most of the landlords were Namboodiri Brahmins while most of the tenants were Mapillah Muslims.
- **The Revolt:** Fuelled by the fiery speeches by Muslim religious leaders and antibritish sentiments, the Mopilla launched a violent rebellion.
- Numerous actions of violence were reported and series of persecutions were committed both against the British and the Hindu landlords.
- **Support:** In the initial stages, the movement had the support of Mahatma Gandhi and other Indian nationalist leaders, but as it turned violent they distanced themselves from it.
- **Collapse:** By the end of 1921, the rebellion was crushed by the British who had raised a special battalion, the Malabar Special Force for the riot.
- **Wagon Tragedy:** In November 1921, 67 Moplah prisoners were killed when they were being transported in a closed freight wagon from Tirur to the Central Prison in Podanur.
- They died of suffocation. This event is called the Wagon Tragedy.



## **Topic 44. ABRAHAM ACCORDS**

### ***Importance for Prelims: IR***

The Ibrahim Accords as India's West Asia Bridge.

- The Ibrahim Accord between Israel, the United Arab Emirates and Bahrain is mediate by the USA.
- It is the first Arab-Israeli peace deal in 26 years.
- The accords square measure named once the patriarch Ibrahim regards as a prophet in each Judaism and Islam
- The Abraham Accords also open the door for Muslims around the world to visit the historic sites in Israel and to peacefully pray at Al-Aqsa Mosque in Jerusalem, the third holiest site in Islam.
- The agreement shows however the Arab countries square measure bit by bit decoupling themselves from the Palestine question.
- Full diplomatic ties are going to be established between Israel, the United Arab Emirates and Bahrain which is able to have a positive impact on the whole region.
- As per the agreements, the UAE and Bahrain can establish: Embassies and exchange ambassadors.
- Working in conjunction with Israel across a variety of sectors, as well as commercial enterprise, trade, aid and security.
- The Ibrahim Accords additionally open the door for Muslims round the world to go to the historic sites in Israel and to peacefully pray at Al-Aqsa masjid in Jerusalem, the third holiest web site in Islam.
- In the Moslem tradition, the Caaba in Mecca is taken into account the holiest web site, followed by the Prophet's masjid in Medina, and Al-Aqsa masjid in Jerusalem.
- **Reason:** Bringing Israel, the UAE and Bahrain together reflects their shared concern about Iran's rising influence in the region and

development of ballistic missiles.

- Iran has been critical of both deals.

## **Topic 45. TRANSIT CAMPS**

### ***Importance for Prelims: Governance***

The “detention centres” in province are renamed “transit camps” to modify them.

- Detention centres are places selected to stay criminal migrants (people WHO have entered a rustic while not necessary documents) once {they are|they're} detected by the authorities until the time their position is confirmed and that they are deported to the country of their origin.
- Detention centres were got wind of in province once the Union government approved the state to try to to thus underneath the provisions of the Foreigners' Act, 1946 and therefore the Foreigners Order, 1948.
- Foreigners Act, 1946: It replaced the Foreigners Act, 1940 conferring wide powers to contend with all foreigners.
- The act spected the govt to require such steps as are necessary to forestall criminal migrants as well as the employment of force.
- The idea of ‘burden of proof’ lies with the person, and not with the authorities.
- The act originally spected the govt to ascertain tribunals which might have powers just like those of a civil court.
- Amendments (2019) to the Foreigners (Tribunals) Order, 1964 spected even district magistrates altogether States and Union Territories to line up tribunals to come to a decision whether or not someone staying lawlessly in Republic of India may be a foreigner or not.

## **Topic 46. DEFENCE INDIA START-UP CHALLENGE (DISC)**

*Importance for Prelims: Science and Tech*



Defence Minister Rajnath Singh launched the fifth edition of the Defence India Startup Challenge (DISC).

- DISC was launched below Innovations for Defence Excellence – Defence Innovation Organisation (iDEX-DIO).
- This challenge is supposed to realize independence and foster innovation and technology development across the defence and part sectors.
- This challenge was launched by Ministry in partnership with Atal Innovation Mission.
- It was launched with the aim of providing support to Start-ups, MSMEs and Innovators to form prototypes or commercialize product and solutions within the fields of National Defence and Security.

## **Topic 47. RIGHTS OF PERSONS WITH DISABILITIES ACT 2016**

### ***Importance for Prelims: Governance***

The Centre has exempted posts underneath the Indian Police Service (IPS) from the mandated four-dimensional reservation for persons with disabilities (PwD) in government jobs, a move that rights teams say goes against the Rights of Persons with Disabilities Act, 2016.

- The Act replaces the Persons with Disabilities (Equal Opportunities, Protection of Rights and Full Participation) Act, 1995.
- It fulfils the obligations to the United National Convention on the Rights of Persons with Disabilities (UNCRPD), to that Asian country may be a someone.
- The Act came into force during December 2016. The types of disabilities have been increased from existing 7 to 21 and the Central Government will have the power to add more types of disabilities.
- Persons with “benchmark disabilities” area unit outlined as those certified to possess a minimum of forty per cent of the disabilities such on top of.
- Rights and entitlements underneath Act Responsibility has been forged upon the acceptable governments to require effective measures to confirm that the persons with disabilities fancy their rights equally with others.
- Additional benefits such as reservation in higher education (not less than 5%), government jobs (not less than 4 %), reservation in allocation of land, poverty alleviation schemes (5% allotment) etc.
- have been provided for persons with benchmark disabilities and those with high support needs.
- Every kid with benchmark incapacity between the cohort of half dozen and eighteen years shall have the correct to free education.

- Government funded academic establishments likewise because the government recognized establishments can have to be compelled to give inclusive education to the youngsters with disabilities.
- For strengthening the Prime Minister's Accessible India Campaign, stress has been given to ensure accessibility in public buildings (both Government and private) in a prescribed time-frame.
- UN Convention on Rights of Persons with Disabilities (UNCRPD) The Convention on the Rights of Persons with Disabilities and its Optional Protocol was adopted on 13 December 2006 at the United Nations Headquarters in New York.
- There were 82 signatories to the Convention.
- The Convention entered into force on 3 May 2008.
- It is the first comprehensive human rights treaty of the 21st century.
- The Convention follows decades of labor by the world organisation to vary attitudes and approaches to persons with disabilities.
- It takes to a brand new height the movement from viewing persons with disabilities as "objects" of charity, medical treatment and social protection towards viewing persons with disabilities as "subjects" with rights, WHO square measure capable of claiming those rights and creating choices for his or her lives supported their free and consent in addition as being active members of society.
- The Convention is meant as a personality's rights instrument with a precise, social development dimension.
- It adopts a broad categorization of persons with disabilities and reaffirms that each one persons with every type of disabilities should fancy all human rights and elementary freedoms.



## **Topic 48. PUBLIC PROCUREMENT (PREFERENCE TO 'MAKE IN INDIA' ORDER) 2017**

### ***Importance for Prelims: Science and Tech***

The Department for Promotion of business and Internal Trade has “observed” that government procuring agencies, together with Public Sector Undertakings, had not enforced the general public acquisition (Preference to ‘Make in India’ Order), 2017, in “letter and spirit”.

- The Order is applicable for acquisition by the Ministry / Department / hooked up / subordinate workplace of, or autonomous body controlled by, the govt. of Bharat and includes Government corporations as outlined within the corporations Act.
- In acquisition of all merchandise, services or works in respect of that the Nodal Ministry/ Department has communicated that there's comfortable native capability and native competition, solely ‘Class-I native supplier’, as outlined underneath the Order, shall be eligible to bid regardless of purchase worth.
- The margin of purchase preference shall be two hundredth. ‘margin of purchase preference’ suggests that the most extent to that the worth quoted by a neighborhood provider is also higher than the L1 for the aim of purchase preference.
- Government amended the general public acquisition (Preference to form in India) Order, 2017 – The modification permits nodal Ministries/ Departments to advise higher minimum native content needs for Class-I & Class-II native suppliers that was earlier mounted at five hundredth and two hundredth severally.

## Topic 49. SOMNATH TEMPLE

*Importance for Prelims: Art and culture*

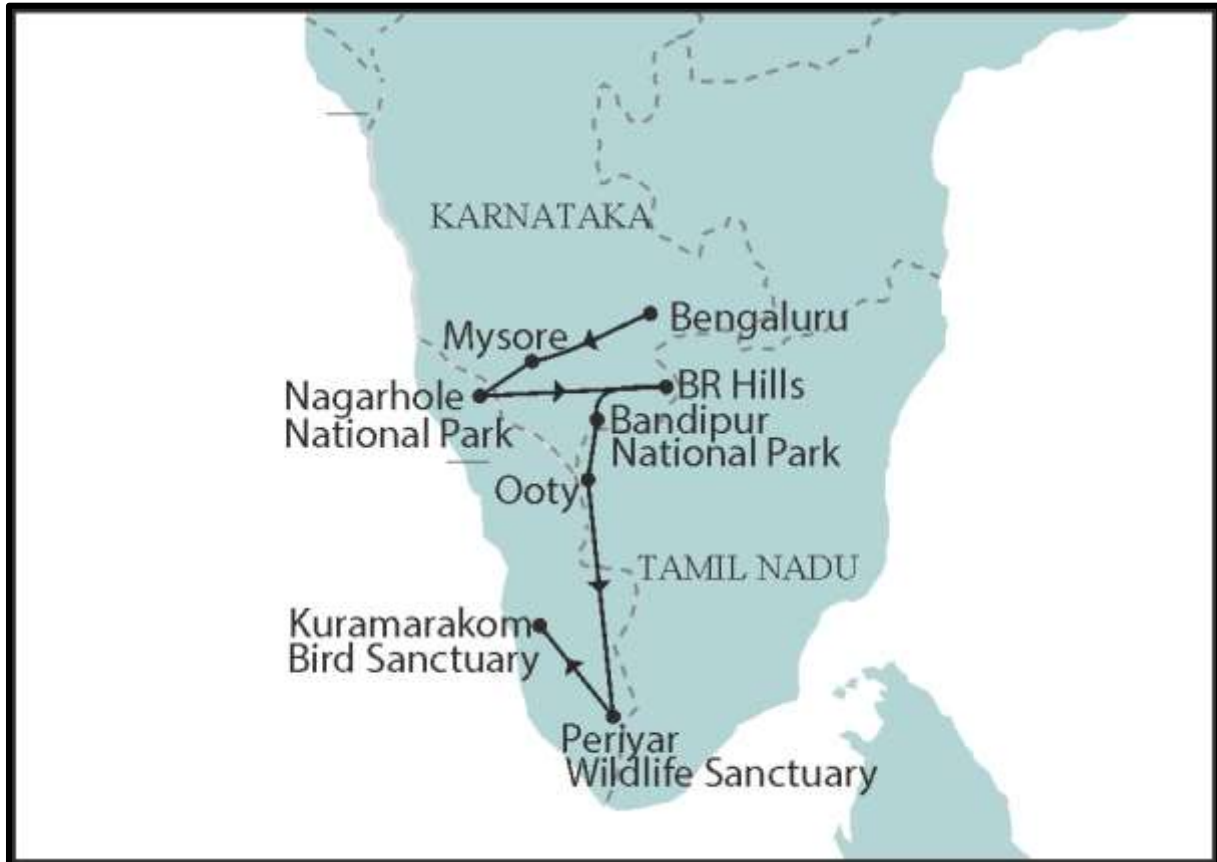


The Prime Minister, in a very refined message, aforementioned “destructive and terror forces” might become dominant briefly however weren't permanent, citing the instance of Somnath temple, that was destroyed and empty many times within the past and resurrected when with larger glory.

- Somnath, literally translated as the Lord of Moon (Soma) houses the first of the 12 Jyotirlingas or the symbolic representation of Lord Shiva.
- This extremely notable pilgrim destination is found at the Viraval Port or PrabhasPattan in Saurashtra, Gujarat.
- It is also known as the Deo Patan.
- The temple's positioning is quite unique.
- The temple is positioned in such the way that not one piece of land is visible from the Somnath sea-coast till Antarctic continent.
- **Troubled History:** In AD 1026, Mahmud of Ghazni first looted the temple, and then came Afzal Khan, the commander of Ala-ud-din Khilji and later Aurangzeb.
- It is said that the temple was looted and destroyed as many as seventeen times.
- The Iron man of India, Sardar Vallabhbhai Patel was instrumental in the construction of the present temple.
- Renowned temple creator Prabhaschandar designed it and also the initial President of Asian nation Dr. Rajendra Prasad put in the Jyotirling within the new temple on night eleven, 1951.
- **Architectural style:** The present temple is built in the Chaulukya style of temple architecture or “Kailash Mahameru Prasad” style and reflects the skill of the Sompura Salats, one of Gujarat's master masons.

## Topic 50. NAGARHOLE NATIONAL PARK

*Importance for Prelims: Environment*



Located in Kodagu district and Mysore district in Karnataka, India.

- It is additionally called 'Rajiv Gandhi parkland'.
- It was established as a life sanctuary in 1955 and was upgraded into a parkland in 1988.
- It was declared as the 37 Tiger reserve under Project Tiger in 1999.
- The Park lies in the Western Ghats and is a part of the Nilgiri Biosphere Reserve.
- The Nagarhole stream flows through the park, that joins the Kabini stream that is also a boundary between Nagarhole and Bandipur parkland.
- **Flora:** The vegetation consists mainly of moist deciduous forests with predominating trees of teak and rosewood.

- **Fauna:** Asian elephants, chital (spotted deer), Indian mouse deer, gaur, stripenecked and ruddy mongooses, grey langur, bonnet macaque, Asian wild dog, leopard, tiger, sloth bear among others.



## **Topic 51. GENERALISED SYSTEM OF PREFERENCES**

### ***Importance for Prelims: IR***

U.S. is no longer fascinated by securing a bilateral trade agreement (FTA) with Bharat.

- It was instituted in 1971 under the aegis of United Nations Conference on Trade and Development (UNCTAD).
- It is aimed at creating an enabling trading environment for developing countries.
- The countries that grant GSP preferences are United States, Australia, Belarus, Canada, the ECU Union, Iceland, Japan, Kazakhstan, New Zealand, Norway, the Russian Federation, European nation, Turkey and therefore the U.S. of America (13 countries).
- The provision and utilization of trade preferences is a key goal of the Istanbul Program of Actions adopted at the UN LDC IV in 2013, as further reaffirmed in SDGs Goal 17.
- The objective of UNCTAD's support on GSP and alternative discriminatory arrangements is to assist developing countries to extend utilization of GSP and alternative trade preferences. United States of America Generalised System of Preferences – The United States of America has declared that it'll terminate India's designation as a beneficiary of its Generalized System of Preferences (GSP) from Gregorian calendar month five, 2019.
- GSP is the largest and oldest U.S. trade preference program.
- Established by the Trade Act of 1974, GSP promotes economic development by eliminating duties on thousands of products when imported from one of 120 designated beneficiary countries and territories.
- Impact of GSP Withdrawal India has been the biggest beneficiary of the GSP regime.



- The sectors that might face the impact of withdrawal of GSP regime area unit gem and jewelry, animal skin and processed foods.
- However, Asian country has aforementioned that the impact is “minimal”, providing Indian exporters were solely receiving exempt edges of \$190 million on the country’s overall GSP-related trade of \$5.6 billion.
- This may impact India’s fight in things teams like raw materials within the organic chemicals sector and negotiant merchandise within the U.S. market, aboard things like iron or steel, furniture, aluminium and electrical machinery.
- The impact on little industries within the country can be important. Such industries would lose their market share within the U.S. while not financial support to assist them maintain their edge.

### **Why GSP was Revoked?**

- Due to a series of choices taken by the Indian government has semiconductor diode to trade friction between 2 countries: India’s new e-commerce rules — that have compact yankee firms like Amazon and Walmart (majority owner of Flipkart).
- Price controls on medical devices (cardiac stents).
- Tariffs on products like smart watches and high-end mobile phones.
- Lack of greater market access for the U.S. dairy industry.

## **Topic 52. HABEAS CORPUS**

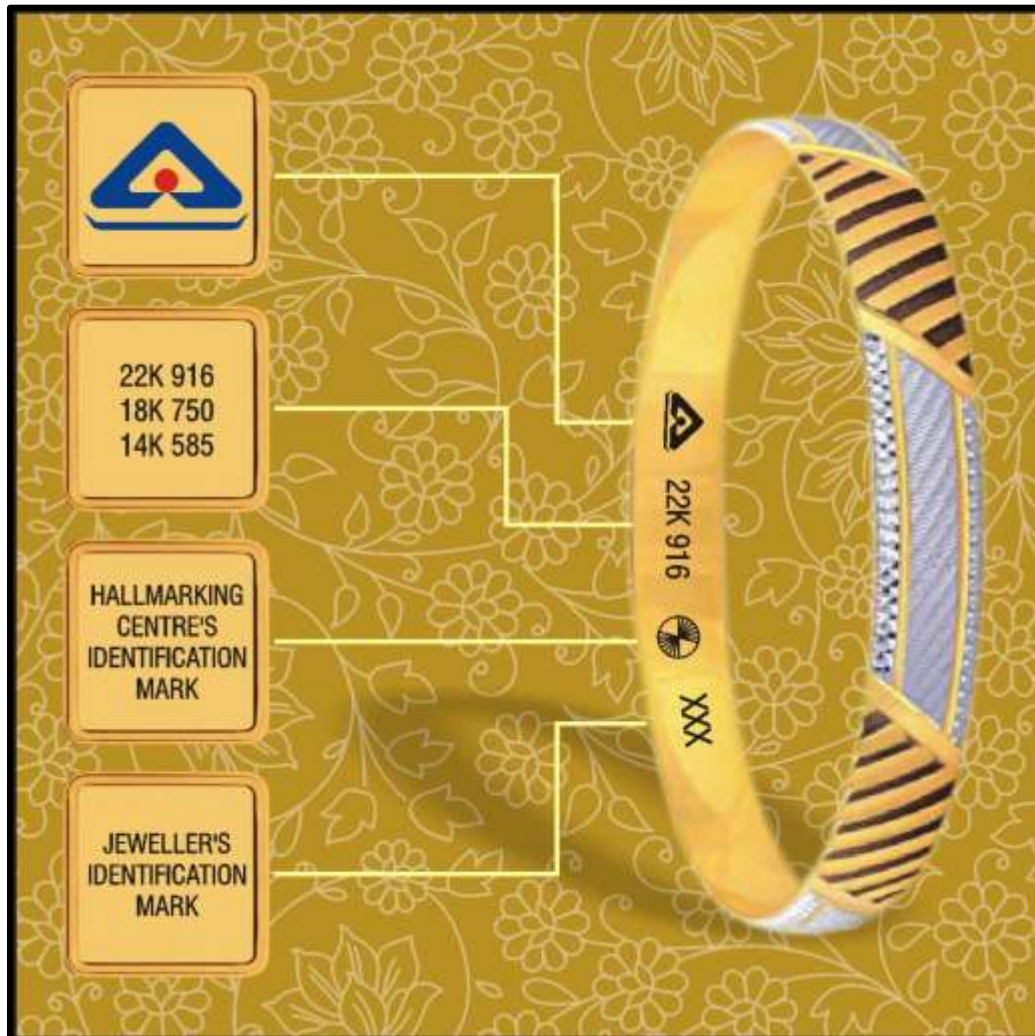
### ***Importance for Prelims: Polity***

HC pulls up U.P. govt. over hospital's condition. A patient has been missing since May.

- It is a Latin term which literally means 'to have the body of'.
- Under this the court issues an order to a person who has detained another person, to produce the body of the latter before it.
- The court then examines the cause and legality of detention.
- This writ is a bulwark of individual liberty against arbitrary detention.
- The official document of habeas corpus are often issued against each public authorities moreover as personal people.
- The writ, on the opposite hand, isn't issued wherever the: detention is lawful, the continuing is for contempt of a assembly or a court, detention is by a competent court, and detention is outside the jurisdiction of the court.

## Topic 53. HALLMARKING

*Importance for Prelims: Economy*



Jeweller's arrange protest against hallmarking.

- The Bureau of Indian customary (BIS), that operates the gold and silver hallmarking theme in Republic of India, defines hallmarking because the “accurate determination and official recording of the proportionate content of valuable in valuable articles.”
- So, it's a “guarantee of purity or fineness” of valuable articles, that started in 2000.
- In India, at the present 2 precious metals particularly gold and silver are brought below the horizon of Hallmarking.

- The BIS certified jewellers will get their jewelry hallmarked from any of the BIS recognized Assaying and Hallmarking Centres (A&HC).
- Earlier, it was optional for the jewellers and thus only 40% of gold jewellery was getting hallmarked.
- Recently, the Ministry of Consumer Affairs, Food & Public Distribution made it mandatory for the hallmarking of gold jewellery, which will be implemented in a phased manner.

## **Topic 54. GEO-HERITAGE SITES**

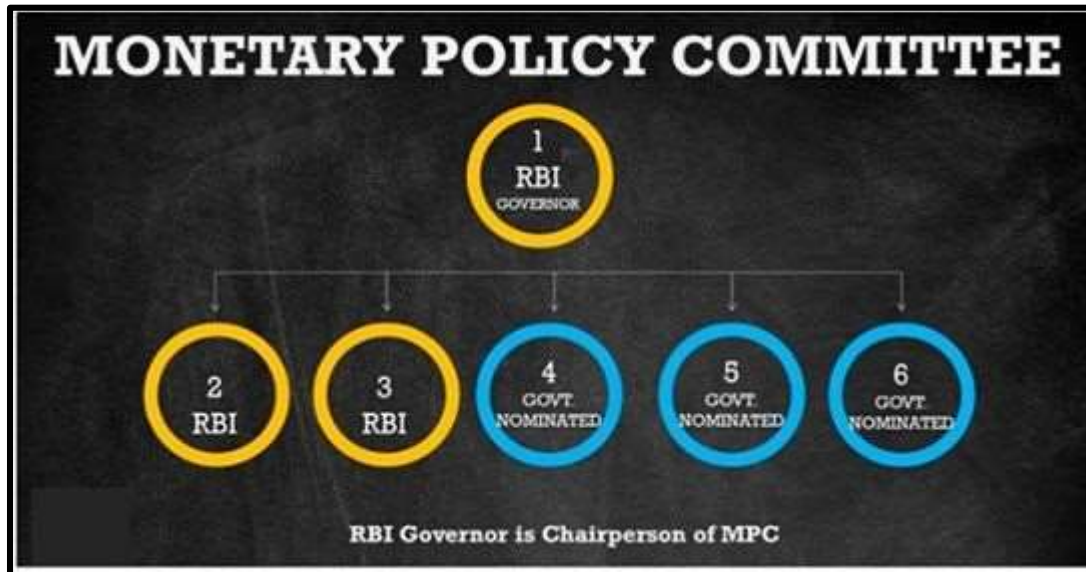
### ***Importance for Prelims: Geography***

GSI lists geo- business enterprise sites in NE to go to when ‘unlock’.

- Geological Survey of Republic of India (GSI) declares geo-heritage sites/ national earth science monuments for cover and maintenance.
- The term earth science heritage is employed for natural earth science or geo-morphological options that have aesthetic, intrinsic or scientific and academic worth, that offer distinctive insight into earth science processes poignant the formation or evolution of Earth.
- While there are 147 UNESCO Global geoparks spread across 41 countries, India is yet to have one of its own.
- 32 approved geo -tourism or geo -heritage sites in India –

## Topic 55. MONETARY POLICY COMMITTEE

*Importance for Prelims: Economy*



MPC's Varma flags risks of policy stance.

- The financial Policy Committee may be a statutory and institutionalized framework beneath the Federal Reserve Bank of India Act, 1934, for maintaining value stability, whereas keeping in mind the target of growth.
- The Governor of run battled in is ex-officio Chairman of the committee.
- The committee contains six members (including the Chairman) – 3 officers of the run battled in and 3 external members appointive by the govt. of India.
- The government nominees to the MPC are going to be elect by a Search-cum choice Committee beneath cupboard Secretary with run battled in Governor and Economic Affairs Secretary and 3 consultants within the field of political economy or banking or finance or financial policy as its members.
- Members of the MPC are going to be appointed for a amount of 4 years and shall not be eligible for reappointment.
- Decisions square measure taken by majority with the Governor having the balloting just in case of a tie.



- The MPC determines the policy rate of interest (repo rate) needed to attain the inflation target (4%).
- An RBI-appointed committee semiconductor diode by the then deputy governor Urjit Patel in 2014 suggested the institution of the financial Policy Committee.
- **Accommodative Stance:** The Monetary Policy Committee (MPC) of the RBI also decided to continue with the accommodative stance as long as necessary to revive growth on a durable basis and mitigate the impact of Covid-19 on the economy, while ensuring that inflation remains within the target going forward.
- These decisions are in consonance with the objective of achieving the medium-term target for Consumer Price Index (CPI) inflation of 4% within a band of  $\pm 2\%$ , while supporting growth.
- Accommodative monetary policy, also known as loose credit or easy monetary policy, occurs when a central bank attempts to expand the overall money supply to boost the economy when growth is slowing (as measured by GDP).
- The policy is enforced to permit cash|the cash|the money} provide to rise in line with value and therefore the demand for money.

## **Topic 56. FOREIGN EXCHANGE MANAGEMENT (NON-DEBT INSTRUMENTS) (SECOND AMENDMENT) RULES 2021**

### ***Importance for Prelims: Economy***

RBI, IRDAI nod should for FDI in bank LED insurance.

- Applications for foreign direct investment in an insurance company promoted by a private bank would be cleared by the RBI and IRDAI to ensure that the 74% limit of overseas investment is not breached.
- The changes took result following amendments to the interchange Management (Non debt Instruments) Rules, 2019, as per the gazette notification issued by the Finance Ministry.
- In March, Parliament passed a bill to lift the foreign direct investment (FDI) limit within the insurance sector from forty ninth to seventy four.

## Topic 57. NARAYANKOTI TEMPLE

*Importance for Prelims: Art and Culture*



MoU for facelift of Narayankoti temple under Centre's Adopt a Heritage project.

- The temple may be a cluster of ancient temples, concerning a pair of klick from Guptkashi on the Rudraprayag-Gaurikund road.
- This is the only place in the country which has nine planetary temples in a group that are a “symbol of nine planets”.
- It is devoted to Lakshmi Narayana who is associated with Pandavas.
- It is believed that these temples were created within the nine century.
- The mention of this temple cluster is additionally found in Kedarkhand.
- From time to time, because of the impact of disasters and lack of care, currently there square measure solely twenty nine temples, whereas within the past there have been 360 temples in teams.
- Adopt a Heritage project – Launched on 27 September, 2017 (World Tourism Day), it is a collaborative effort by the Ministry of Tourism, Ministry of Culture and Archaeological Survey of India (ASI), State/UTs Governments.
- **Aim** -To develop business amenities at heritage/natural/ traveler sites unfold across Asian country to form them traveler friendly, in a very planned and phased manner.
- **Implementation:** The sites/monuments square measure elect on the idea of traveler sound associate degreed visibility and may be adopted by non-public and public sector firms and people — referred to as Monument Mitras — for an initial amount of 5 years.
- The Monument Mitras square measure elect by the ‘oversight and vision committee,’ co-chaired by the business Secretary and also the Culture Secretary, on the idea of the bidder’s ‘vision’ for development of all amenities at the heritage web site.
- There is no financial bid involved.
- The company sector is anticipated to use company Social Responsibility



(CSR) funds for the maintenance of the positioning.

## **Topic 58. CENTRAL CONSUMER PROTECTION AUTHORITY (CCPA)**

### ***Importance for Prelims: Governance***

CCPA cracks down on corporations with deceptive Covid ads.

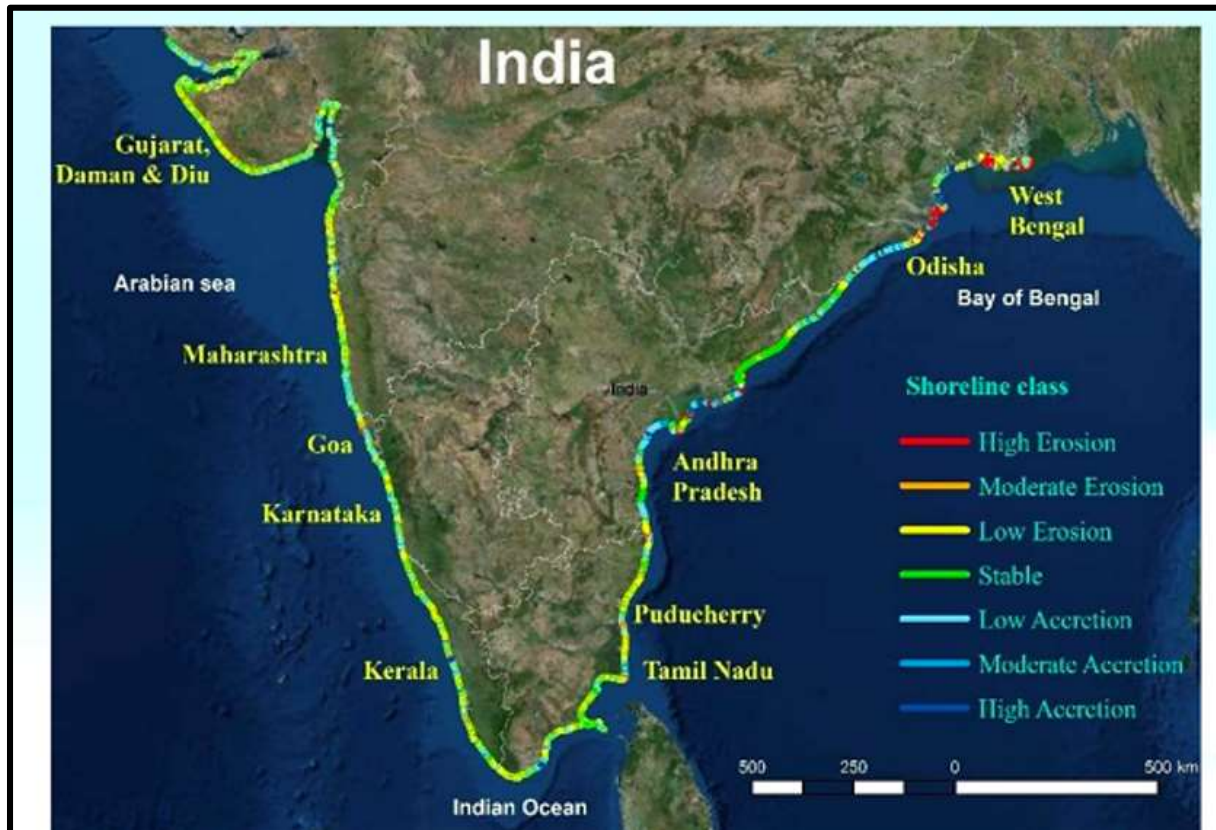
- The Consumer Protection Act, 2019 establishes the Central Consumer Protection Authority (CCPA) whose primary objective is to push, defend and enforce the rights of consumers.
- It will be empowered to conduct investigations into violation of consumer rights and institute complaints / prosecution, order recall of unsafe goods and services, order discontinuation of unfair trade practices and misleading advertisements, impose penalties on manufacturers/endorsers/publishers of misleading advertisements.
- It is headquartered within the urban center Region of city however the central government could create regional offices in different components of the country.
- The Act defines “misleading advertisement” in respect to any product or service, as “an ad, which— (i) incorrectly describes such product or service; or (ii) offers a false guarantee to, or is probably going to mislead the consumers on the character, substance, amount or quality of such product or service; or (iii) conveys Associate in Nursing categorical or implicit illustration that, if created by the manufacturer or vendor or service supplier then, would represent Associate in Nursing unfair trade practice; or (iv) deliberately conceals vital information”.
- Composition: it'll have a Chief Commissioner as head, and solely 2 different commissioners as members — one in all whom can modify matters regarding product whereas the opposite can scrutinize cases regarding services.



- The CCPA can have Associate in Nursing Investigation Wing which will be headed by a Director General. District Collectors too, can have the ability to analyze complaints of violations of shopper rights, unfair trade practices, and false or deceptive advertisements. Ministry of shopper Affairs, Food and Public Distribution is nonetheless to issue tips on deceptive advertisements.

## Topic 59. INDIAN COASTLINE

*Importance for Prelims: Geography*



Redraw coastline to cope with rise in sea level’.

- India has a coastline of 6 Km [6100 km of mainland coastline + coastline of 1197 Indian islands] touching 13 States and Union Territories (UTs).
- The straight and regular coastline of India is the result of faulting of the Gondwanaland during the Cretaceous period (Continental Drift) As such the coast of India does not offer many sites for good natural harbours.
- [Indented coastlines of Europe offer smart natural harbours whereas African and Indian coastlines don't seem to be indented].
- The Bay of geographical region and therefore the Arabian Sea came into being throughout the Cretaceous or early geological period when the disintegration of Gondwanaland.

## **Topic 60. LAND DEGRADATION AND DESERTIFICATION**

*Importance for Prelims: Environment*



Despite PM Modi's assurance, land degradation, geologic process increasing

- Land degradation is caused by multiple forces, together with extreme atmospheric condition, significantly drought.
- It is also caused by human activities that pollute or degrade the quality of soils and land utility.
- Desertification is a consequence of severe land degradation and is defined as a process that creates arid, semi-arid and dry sub-humid areas.
- It accelerates climate change and biodiversity loss, and contributes to droughts, wildfires, involuntary migration and the emergence of zoonotic infectious diseases.
- Status of Desertification in India 96 million hectares or close to 29.7% of India's area is undergoing degradation.
- According to the Government's data recently presented to the United

Nations Convention to Combat Desertification (UNCCD), India lost 31%, or 5.65 million hectares (mha), of grassland area in a decade.

- Some 97.85 million hectares (mha) of India's total geographic area (TGA) of 328.72 mha underwent land degradation throughout 2018-19, consistent with the geologic process and Land Degradation Atlas of Bharat.
- More than eightieth of the country's degraded land lies in mere 9 states.
- **Global Efforts to envision Land Degradation:** world organization Convention to Combat geologic process (UNCCD): it absolutely was established in 1994, the only de jure binding international agreement linking setting and development to property land management.
- The Delhi Declaration of 2019, signed by 14 CoP of the UNCCD, called for better access and stewardship over land, and emphasised gender sensitive transformative projects.
- **The metropolis Challenge:** To bring a hundred and fifty million hectares of the world's deforested and degraded land into restoration by 2020, and 350 million hectares by 2030.
- **Great inexperienced Wall:** Initiative by international setting Facility (GEF), wherever eleven countries in Sahel-Saharan Africa have centered efforts to fight against land degradation and revive native flora to the landscape.



## **Topic 61. GREENLAND SUMMIT**

### ***Importance for Prelims: Environment***

On Sabbath last week, for the primary time on record, the summit of island received rain and not snow, even as temperatures at the spot went on top of temperature reduction for the third time in but 10 years. The event has sparked concern as scientists are informed that as proof that island is warming chop-chop.

- As per the US National Snow and Ice information Center, this was the heaviest downfall that the ice sheet received since record keeping began in 1950, with Sunday witnessing a rate of ice melting that was seven times quite the daily average that's ascertained at this point of the year.
- Greenland, that is that the world's largest island placed between the Arctic and Atlantic oceans, has three-quarters of its surface lined with a permanent ice sheet, that is more and more returning underneath threat as a result of temperature change.
- At the best purpose on Greenland's ice sheet, America's National Science Foundation maintains a Summit Station, a quest facility that observes changes occurring over the island further as in Arctic weather.
- The rain, as well as heat conditions, caused a significant melting event at the summit, adding to considerations of fast ice melting running off into the ocean in volumes, so fast international water level rise.
- Greenland, that is simple fraction the scale of Asian nation, already witnessed one in every of its most severe melting events of the past decade last month, once it lost eight.5 billion heaps of surface mass in one day– the third such extreme event within the past decade.
- The UN's "code red" climate report released last week concluded that the burning of fossil fuels led to Greenland melting in the last 20 years.
- The fast melting is additionally threatening polar bears, that currently got

to build their manner many kilometres towards Greenland's interior from the coasts, wherever they typically notice enough food.



## **Topic 62. ONAM**

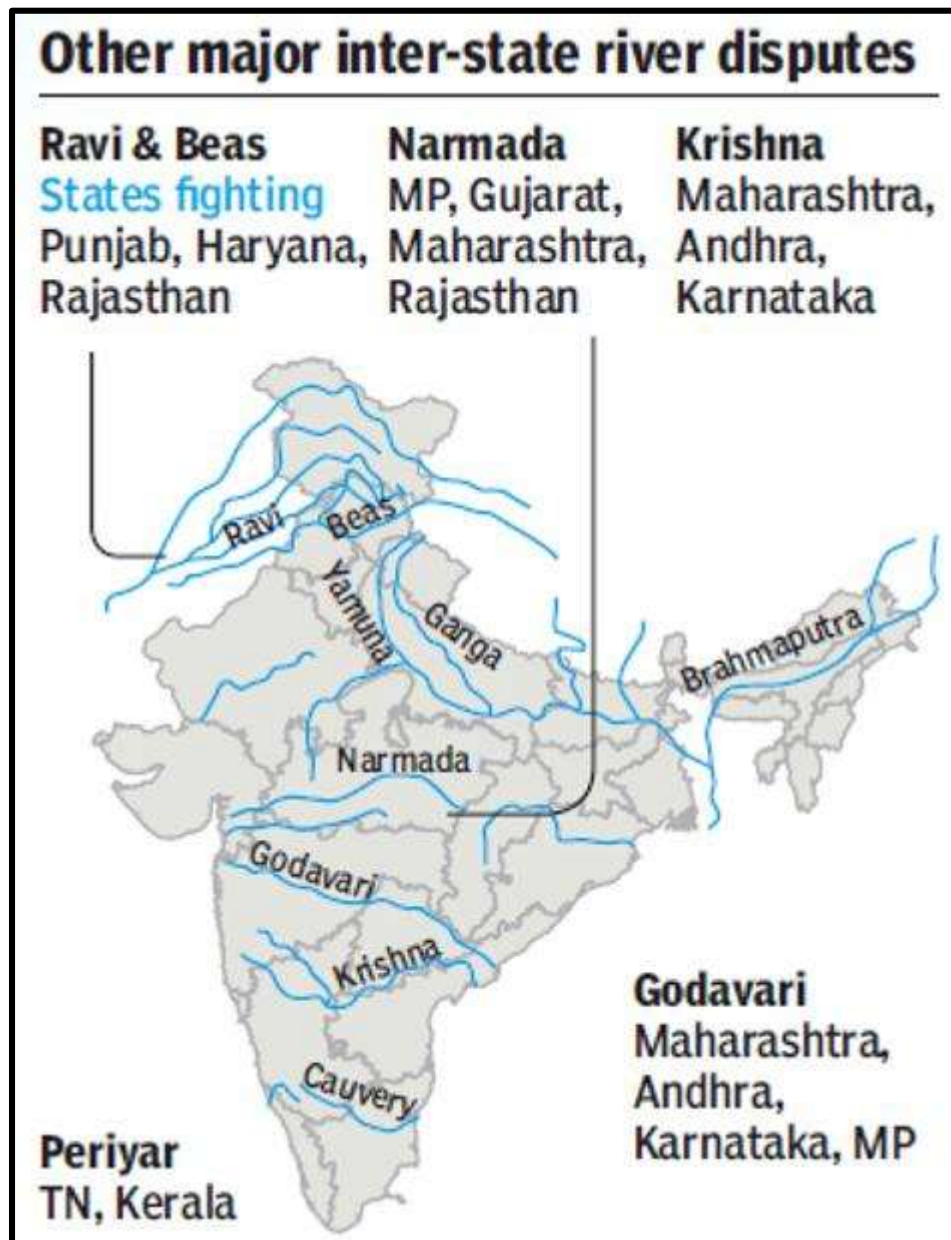
### ***Importance for Prelims: Art and Culture***

The Prime Minister, Shri Narendra Modi has greeted the folks on the occasion of Onam.

- Onam may be a gathering competition discovered by the Malayalis throughout the month of Chingam, the primary month within the South Dravidian calendar, Kollavarsham.
- It usually falls in the month of August and September every year.
- According to legends, the competition is widely known to commemorate King Mahabali, whose spirit is alleged to go to Kerala at the time of Onam. Onam celebrations embrace Vallam Kali (boat races), Pulikali (tiger dances), Pookkalam (flower Rangoli), Onathappan (worship), Onam Kali, Tug of War, ThumbiThullal (women's dance), Kummattikali (mask dance), Onathallu (martial arts), Onavillu (music), Kazhchakkula (plantain offerings), Onapottan (costumes), Atthachamayam (folk songs and dance), and alternative celebrations many ancient rituals are unit performed and celebrated by a lavish feast referred to as 'Sadhya'.
- Women perform people dances that is additionally a significant attraction of the competition. Kaikottikali may be a clap dance performed by ladies.
- While dancing they praise King Mahabali.
- They conjointly dance in a very circle and it's referred to as ThumbiThullai.

## Topic 63. KRISHNA RIVER WATER DISPUTE

*Importance for Prelims: Geography*



Chief Minister Basavaraj Bommai are presently traveling to New Delhi to debate the legal hurdles in raising the peak of the Almatti dam to 524 metres from 519 metres.

- The river is an east-flowing stream that originates at Nashik in Maharashtra, flows through the Deccan trap region and merges with the Bay of Bengal. It flows through the Deccan trap region, Karnataka, Andhra Pradesh, and finally into the Bay of Bengal.

Telangana and AP.

- Together with its tributaries, it forms a vast basin that covers 33% of the total area of the four states.
- A dispute over the sharing of avatar waters has been in progress for several decades, starting with the erstwhile Hyderabad and Mysore states, and later continued between successors.
- **Inter-State River Water Disputes:** Article 262 of the Constitution provides for the adjudication of inter-state water disputes.
- Under this, Parliament could by law offer for the judgment of any dispute or criticism with reference to the utilization, distribution and management of waters of any inter-state stream and stream vale.
- Parliament may offer that neither the Supreme Court nor the other court is to exercise jurisdiction in respect of any such dispute or criticism.
- The Parliament has enacted the two laws, the River Boards Act (1956) and the Inter-State Water Disputes Act (1956).
- The watercourse Boards Act provides for the institution of watercourse boards by the Central government for the regulation and development of Inter-state watercourse and watercourse valleys.
- A River Board is established on the request of state governments concerned to advise them.
- The Inter-State Water Disputes Act empowers the Central government to line up an advertisement hoc assembly for the judgement of a dispute between 2 or additional states in relevance the waters of associate inter-state watercourse or watercourse depression.
- The call of the assembly is final and binding on the parties to the dispute. Neither the Supreme Court nor the other court is to own jurisdiction in respect of any water dispute which can be named such

a assembly underneath this Act.

- Krishna River – The Krishna River is the second biggest river in peninsular India after the Godavari River.
- It originates near Mahabaleshwar (Satara) in Maharashtra.
- It runs from four states geographic area (303 km), North state (480 metric linear unit) and therefore the remainder of its 1300 km journey in Telangana and Andhra Pradesh before it empties into the Bay of geographic area. Tributaries: Tungabhadra, Mallaprabha, Koyna, Bhima, Ghataprabha, Yerla, Warna, Dindi, Musi and Dudhganga.
- Pattiseema raise Irrigation project is that the 1st river-linking project in India, connecting Godavari with Krishna through the Polavaram right canal.
- It can divert surplus Godavari water to Krishna watercourse. Almatti Dam – The Lal Bahadur Shastri Dam is also referred to as Almatti Dam may be a electricity project on the Krishna River in North state.
- The backwaters of the dam host several migratory birds during summer.



## Topic 64. HAMPI

*Importance for Prelims: Art and Culture*



Vice- President M. Venkaiah Naidu visited Hampi.

- It may be a United Nations agency world heritage website.
- It was a vicinity of the Mauryan Empire back within the third century B.C..
- Hampi was the capital town throughout the four completely different dynasties altogether within the Vijayanagar town that came into existence within the year 1336 AD.
- The Vijayanagara Empire reached unfathomable heights below the steering of King Krishnadeva Raya of the Tuluva phratry.
- ‘KishkindhaKaand’ in Ramayana has special significance regarding Hampi.
- It is found close to the Tungabhadra stream.
- By 1500 AD, Hampi-Vijayanagara was the world’s second-largest medieval-era town once Peiping, and doubtless India’s richest at that point, attracting traders from Persia and Portuguese Republic.
- It has been described by UNESCO as an “austere, grandiose site” of more than 1,600 surviving remains of the last great Hindu kingdom in South India. Group of Monuments at Hampi – The Vitthala temple in Hampi is an excellent example of Vijayanagar style.
- The monolithic statues of Hindu deity, Narasimha and Ganesha are a unit noted for his or her massiveness and style.
- The Krishna temple, Pattabhirama temple, Hazara Ramachandra and Chandrasekhara temple as also the Jain temples, are other examples.
- Zenana enclosure wherein a massive stone basement of the Queen’s palace and ornate pavilion called ‘Lotus-Mahal’ are the only remnants of a luxurious ‘Antahpura’.



- The corner towers of stunning elevation, the Dhananayaka's enclosure (treasury), the Mahanavami Dibba carrying superbly sculptured panels, a range of ponds and tanks, Mandapas, the elephant's stables and also the row of columned Mandapas area unit a number of the vital field of study remains of Hampi.

## **Topic 65. UBHARTE SITARE FUND**

### ***Importance for Prelims: Economy***

Finance minister Nirmala Sitharaman launched Rs 250 large integer price various Investment Fund for export-oriented little and mid-sized firms.

- UbharteSitaare fund has been came upon together by Exim Bank and SIDBI which can invest within the fund by method of equity and equity-like product in export-oriented units, in each producing and services sectors.
- The fund will also have a greenshoe option of Rs 250 crore.
- A greenshoe or associate degree 'over-allotment option' could be a provision in associate degree IPO underwriting agreement that has the underwriter with the proper to sell additional shares than originally planned.
- It enables the investment bank representing the underwriters to support the share price after the offering without putting their own capital at risk.
- Ubharte Sitaare Programme (USP) identifies Indian firms that have the potential to be future champions within the domestic arena whereas meeting international demands and standards.
- The aim is to spot such firms that area unit underperforming however have potential benefits in terms of technology, processes or product, and export potential.
- Alternate Investment Fund can supply a mixture of each money and consultative services and structured support through investments in equity or equity-like instruments.
- Also assist with debt (funded and non-funded) and technical help together with consultative services, grants and soft loans to the Indian firms.
- The main purpose is to encourage MSMEs as they're important to the

economy in terms of making jobs, doing innovations and taking risks.

## **Topic 66. KASHMIR CARPET**

### ***Importance for Prelims: Art and Culture***

Kashmir's illustrious hand-knotted carpet, with its complex and vibrant floral patterns, adorned a special cowl of the Indian mail service on.

- A Kashmir rug is a hand-knotted oriental rug from Kashmir valley in India, which is associated with Kashmiri handicrafts.
- Kashmir rugs or carpets have complex styles that are primarily oriental, floral vogue during a variety of colours, sizes and quality.
- They are primarily created using pure wool, pure silk and sometimes wool and silk blends.
- Kashmir rugs are renowned to have bright, jewel-like color tones such as sapphire blue, ruby red, emerald green, aquamarine, amethyst, and ivory.
- The geographical region carpet faces powerful competition internationally from the product of states like China, Turkey and European nation, and internally from carpets factory-made in Jaipur, Agra, Bhadohi and Amritsar.
- Around 80,000 people are associated with carpet manufacturing in Kashmir, which saw a major jump in both manufacturing and exports post 1990, with the production going up from ₹84.55 crore in 1990-91 to ₹821.5 crore in 2016-17.

## Topic 67. MADUR MATS

*Importance for Prelims: Art and Culture*



Madurkathi mats, or madur, are unit mats woven in the province from a reed known as madurkottir, or madurkathi, a bog plant of the monocot family.

- Madur mat-making is a long-standing tradition, centred on the Medinipur district, and is an important part of the rural economy.
- Madur mats are made of natural fibres.
- The mats are woven mainly by weavers of the Mahishya caste, and predominantly by women.
- This manufacture contributes considerably to village home financial gain.
- The mats are non-conductive and sweat-absorbing, making them an essential household item in West Bengal's hot and humid climate.

- These mats are used for spiritual functions.
- On March twenty eight, 2018, Indian federal agency granted the govt. of province a Geographical Indication (GI) Tag for madurkathi, underneath registration no. 567 in respect of handicrafts. ‘Masland’ a fine quality madur mat, that takes weeks to weave.
- During the 18th century, Masland mats flourished under royal patronage. In 1744, Nawab Alibardi Khan issued a charter to land owning jagirdars in this regard, and as a result, it was obligatory to supply Masland mats for use in the Collectorate.
- The style and also the quality of fabric used verify the worth of the madur.



## Topic 68. ASIAN ELEPHANTS

*Importance for Prelims: Geography*



Sri Lanka elephants to urge biometric ID cards.

- There are three subspecies of Asian elephant which are the Indian, Sumatran and Sri Lankan.
- Global Population: calculable twenty,000 to 40,000. Asian nation is that the natural home of the biggest population of Asian elephants.
- It is also found in Nepal, Bangladesh, Bhutan and Myanmar.
- There are around twenty eight,000 elephants in Asian nation with around twenty fifth of them in Mysore.
- IUCN Red List Status: Wildlife (Protection) Act, 1972: Schedule I.

## **Topic 69. STORM HENRI**

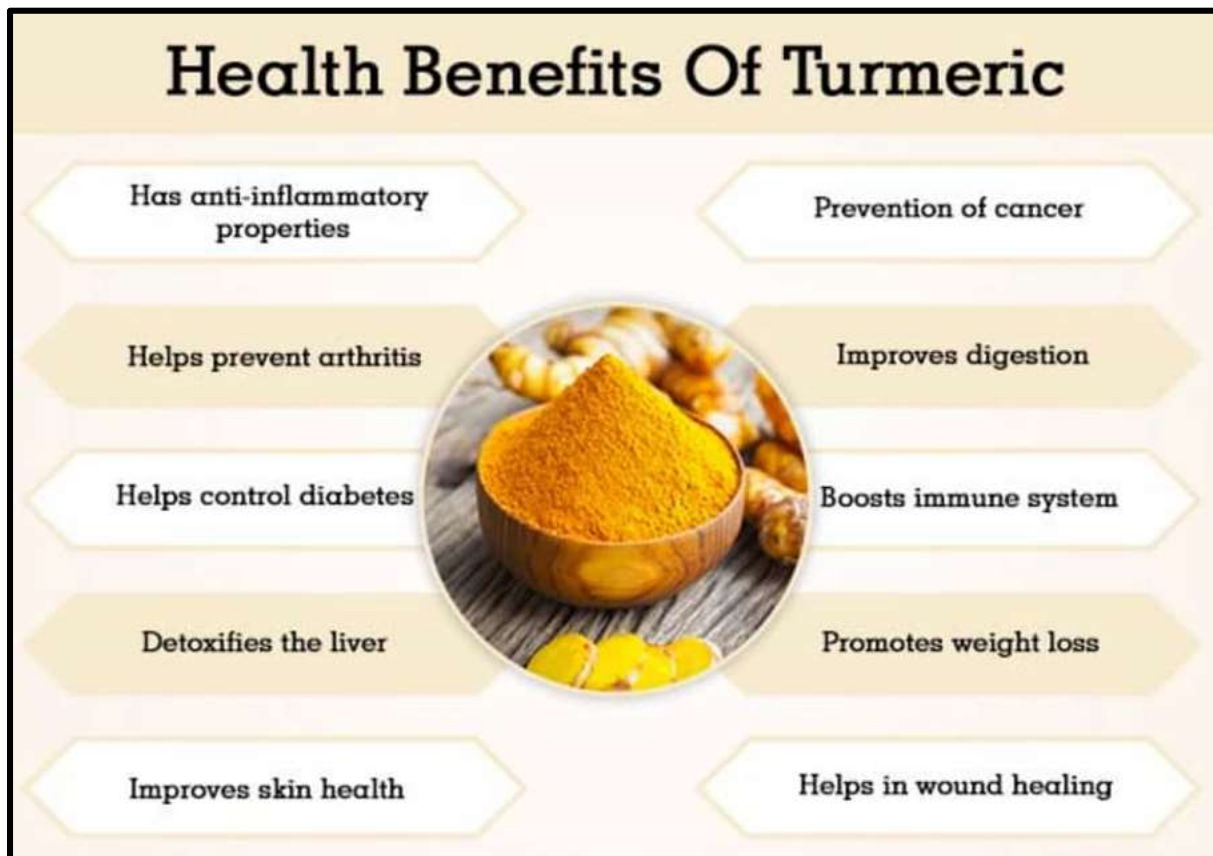
### ***Importance for Prelims: Geography***

Hurricane threatens U.S. East Coast.

- A swath of the U.S. East Coast, including New York City, was under alert on Saturday, as storm Henri was upgraded to what could be the first hurricane in 30 years to hit New England.
- For more information on cyclones, please refer to Tropical Cyclones.

## Topic 70. TURMERIC

*Importance for Prelims: Environment*



Turmeric (*Curcuma longa*): it's a perennial tracheophyte of the Zingiberaceae. The plant's underground stems or rhizomes are used as a spice, dye, medicine, and non secular maker since antiquity.

### **Significance:**

- The spice's color comes primarily from curcumin, a bright yellow phenoplast compound that has been within the news for its ostensible potential to fight cancer.
- As a result, the demand for turmeric with high curcumin content has up.

### **Climate:**

- It requires temperatures between 20 and 30 °C (68 and 86 °F) and a considerable amount of annual rainfall to thrive.

### **Largest Producer:**

- India is that the largest producer and bourgeois of turmeric within the world. Turmeric occupies concerning 6 June 1944 of the entire space beneath spices and condiments in Asian country.

**Largest Producer State:**

- Telangana was the leading producer of turmeric in Asian country throughout 2018.
- Maharashtra and province were second and third within the ranking that year.

## **Topic 71. AIRPORTS ECONOMIC REGULATORY AUTHORITY OF INDIA (AMENDMENT) BILL 2021**

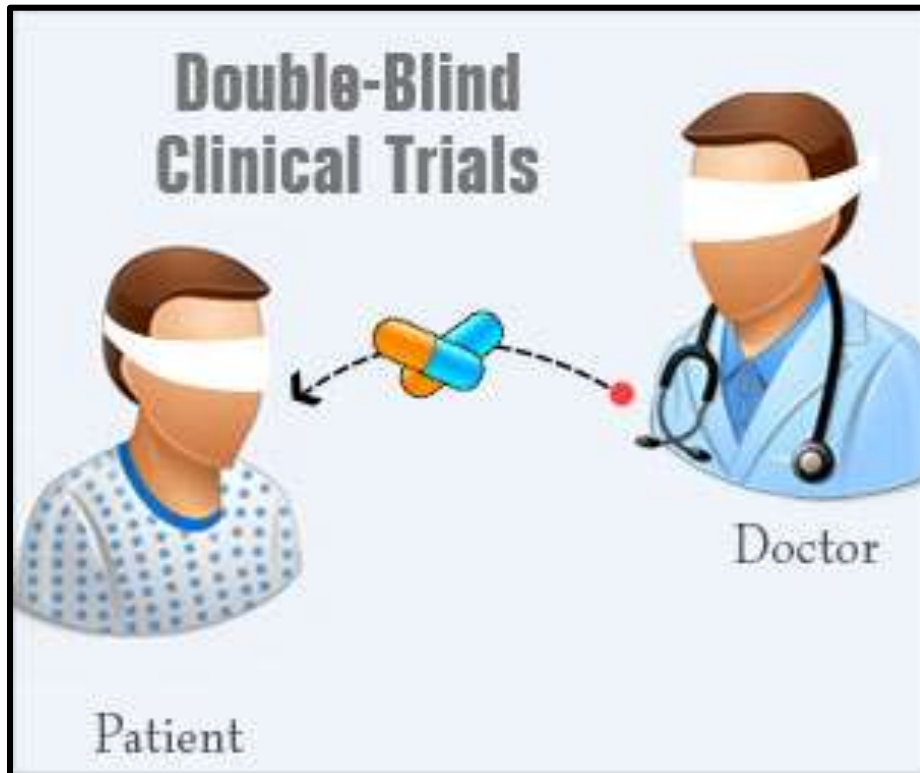
### ***Importance for Prelims: Government Schemes***

In the monsoon session, Parliament passed the Airports Economic administrative unit of India (Amendment) Bill, 2021.

- It seeks to amend the Airports Economic administrative unit of India Act, 2008.
- The 2008 Act established the flying field Economic administrative unit (AERA).
- AERA regulates tariffs and alternative charges (such as flying field development fees) for natural philosophy services rendered at major airports in India.
- The 2008 Act designates AN flying field as a serious flying field if it's AN annual rider traffic of a minimum of thirty five 100000.
- The central government may also designate any airport as a major airport by a notification.
- The Bill adds that the central government may group airports and notify the group as a major airport.

## Topic 72. DOUBLE BLIND TRIAL

*Importance for Prelims: Science and Tech*



Year later, several participants of immunizing agent trials look certification.

- A type of clinical trial in which neither the participants nor the researcher knows which treatment nor intervention participants are receiving until the clinical trial is over.
- Double blind studies prevent bias when doctors evaluate patients' outcomes.
- This improves responsiveness of test results.
- The aim of this can be to reduce the outcome and minimize bias.
- This differs from alternative sorts of trials, like straightforward blind trials wherever solely the patients square measure unaware of the treatment they're receiving, whereas the doctors understand.
- Double-blind trials square measure a variety of irregular trials and might be 'upgraded' to triple blind trials, within which the statisticians



or knowledge clean-up personnel are blind to treatments.

## Topic 73. GWADAR PORT

*Importance for Prelims: Geography*

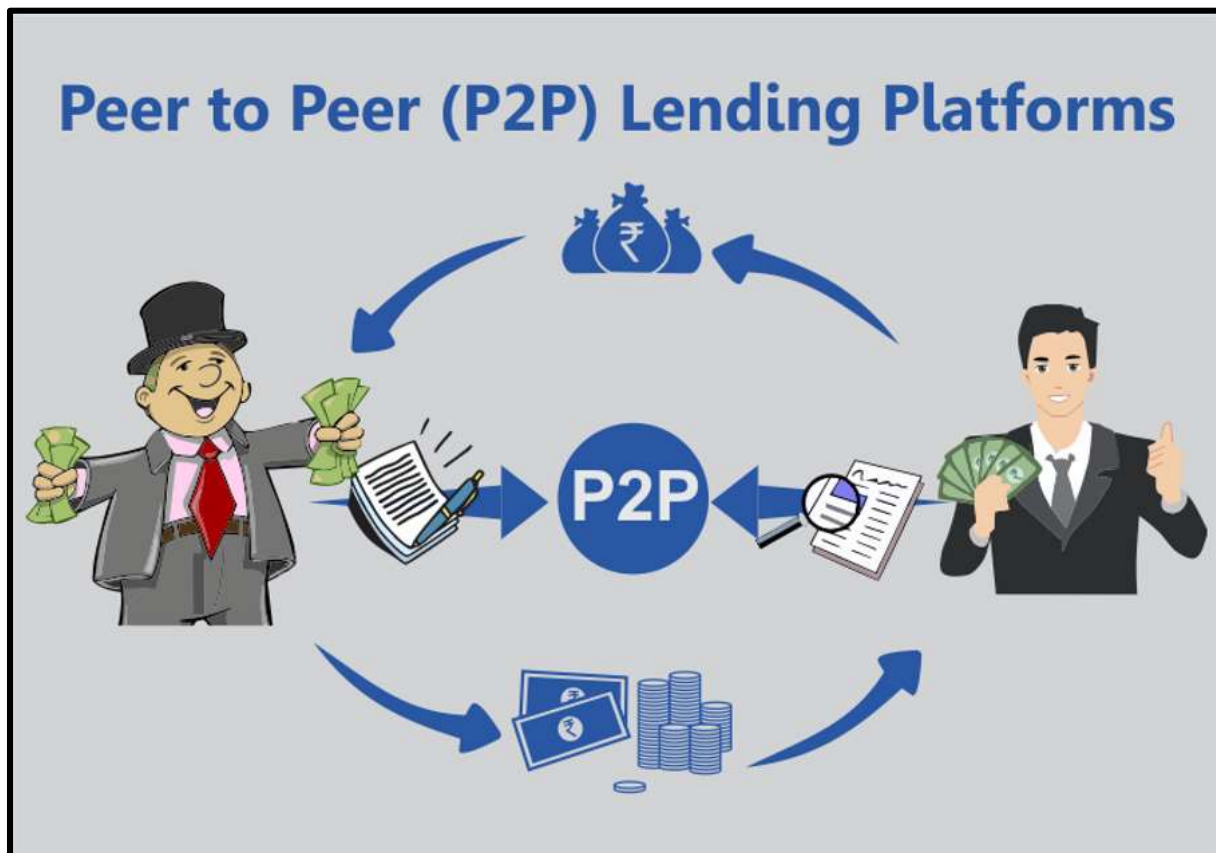


Protests in West Pakistan erupt against China's belt and road set up.

- Gwadar Port is a warm water port located in Pakistan's Balochistan Province.
- It could be a deep harbour placed on the Arabian Sea in Gwadar. This port is deemed as a link between China's One Belt One Road project and its Maritime trade route Project.
- It features majorly in the CPEC.
- The port is placed at the gulf mouth, outside the Hormuz Strait, getting ready to the necessary shipping routes to and from the Gulf of Persia.
- The port is managed by a Chinese government company.

## Topic 74. PEER-TO-PEER LENDING

*Importance for Prelims: Economy*



Fintech platform believability has launched a peer-to-peer loaning feature known as believability Mint.

- P2P lending is a form of crowd funding; an online platform that matches lenders with borrowers in order to provide unsecured loans.
- The borrower can either be an individual or a business requiring a loan.
- A fee is paid to the platform by each the loaner and also the recipient. P2P loaning isn't a replacement feature.
- In 2017, the depository financial institution of Asian country had brought this service below its regulative view.
- In P2P lending, users sitting on idle money provide loans to potential borrowers identified by the service provider.
- These lenders then receive payments from the borrowers on a group basis

— either just once, or in equated monthly instalments.

- Some of the major companies operating in this space include Rupee Circle, Finzy, India Money Mart, etc.
- Risks related to P2P loaning – one in every of the largest risks related to this type of loaning is that the non-repayment of loans.
- Given that P2P loaning may be a style of unsecured loan, there's no guarantee place up by the recipient for the loaner to redeem just in case of a default.
- However, the unsecured nature of the loan is additionally the rationale behind the high come back on investment compared to alternative debt instruments.

## **Topic 75. PARTICIPATORY NOTES (P-NOTES)**

### ***Importance for Prelims: Economy***

P-note investment rises to 40-month high in July.

- Participatory notes (P-notes) are issued by registered foreign portfolio investors (FPIs) to overseas investors. World Health Organization would like to be a vicinity of the Indian stock exchange while not registering themselves beneath SEBI directly when researching a due diligence method.
- The increase in P-notes investment is in line with the higher net inflows of Foreign Portfolio Investors (FPIs) in the cash segment.
- P-Notes are Offshore spinoff Investments (ODIs) with equity shares or debt securities as underlying assets, as they're employed by the investors abroad however not inside Asian country.
- They provide liquidity to the investors as they can transfer the ownership by endorsement and delivery.
- While the FIIs need to report all such investments every quarter to SEBI, they have not disclose the identity of the particular investors.

